

2013-2014

# Housing/Food Services



University of  
Southern Indiana



# Get the Edge.

Living on campus  
is a great way to  
transition into your new  
"home away from home"  
at USI.

► *Get the Edge* on your USI experience with the convenience and affordability campus housing offers.

► *Get the Edge* by being involved in the educational, social, and recreational activities that come with being part of the housing community.

► *Get the Edge* in a Living Learning Community (LLC) where you can make friends and build relationships with others who share your major and interests.

► *Get the Edge* with a variety of meal plans that please your taste buds as well as your budget.

USI.edu

University of  
Southern Indiana



**Congratulations on your admission to the University of Southern Indiana.**

Now that you have chosen USI, discover where you will live during your college experience. Many things, like convenience, safety, and cost, will impact your decision.

This booklet will help you plan how you will connect with fellow students, University services, library facilities, and computer resources. Also think about how you will navigate this dynamic, innovative, and challenging university. We think you will see that campus housing is the right place for you.

Inside, you will find information about campus housing and directions to the online application. On-campus housing is a popular option for many students, so don't delay, apply today!

With Screaming Eagle Pride,

The Housing and Residence Life Team

# Inside

Campus Living Advantages	2
Campus Living Options	6
Living Learning Communities	8
Communities and Rooms	10
Food Service Operations	13
Winter, Summer, and Disability Housing	16
Late Applicants, Payments, Contracts, and Rates	18
How to Apply and Timeline	19









# CAMPUS LIVING: **advantages**

## **Accept the Challenge!**

**College is a time of transition—and a time of preparation.** Living on campus is an outstanding way to prepare for life beyond the college experience. You will learn basic living skills like cooking, laundry, cleaning, and budgeting. When you become part of our housing community, you take advantage of the rich variety of educational, social, cultural, and recreational activities that will help you now and in the future.

### ► **Academic Support**

Campus housing provides educational programs, living learning communities, computer labs, study lounges, and quiet hours to maintain an environment supportive of academic success.

### ► **Choice**

First-year students may choose to live in campus apartments or in the residence halls. Students who choose residence hall living may apply to live in one of nine different first-year living learning communities. Students in their second, third, and fourth years may choose to live in one of four different apartment areas.

### ► **Technology Services**

All campus housing facilities have direct Ethernet connections and wireless Internet access to serve your academic needs. Computers are located in the residence halls, Housing and Residence Life Center, and Residence Life Community Center. Students are close to University computer labs and can get technical support from the USI Information Technology department.

### ► **Convenience**

By living on campus, you are always close to academic buildings, Rice Library, the Recreation, Fitness, and Wellness Center (RFWVC), campus activities, athletic events, campus dining options, and the campus shuttle bus. Because things are convenient, you seldom have to search for a parking space, something to do, or help when you need it.

### ► **Friendship**

From the day you move in, you'll find a variety of educational and social programs that help ease your transition to USI. Living on campus provides the best environment for expanding your understanding of people and for making new friends.

### ► **Involvement**

Campus living also provides great ways to easily get involved in USI campus life by joining clubs and organizations, participating in intramurals, attending athletic events, taking on leadership roles, exploring academic programs, and simply kicking back and hanging out with friends.

### ► **Safety and Security**

Campus housing is staffed with full-time professional and part-time student staff who are dedicated to supporting your success at USI. Housing staff members are available and on call. USI Public Safety is always available to assist you.

### ► **Save Money**

Campus living is affordable, maintenance-free, and your bills are predictable. Cable television, Internet service, utilities (electric, water, sewage, local phone), and shuttle bus service are provided at no additional cost. This leaves you free to focus on the most important things—your academic and personal success!







# CAMPUS LIVING: **advantages**

## **We have what you need to succeed!**

**Whether you are in a campus apartment or one of the residence hall suites, you will have all you need to succeed.** All rooms are furnished, and are equipped with a telephone, phone services, ethernet connections and wireless Internet access. Utilities are included in your housing rate. Even basic expanded cable service is available—you simply provide the television. All campus communities have laundry facilities for student use and parking near where you live.

## **Campus Housing is divided into five communities:**

### **1. Residence Halls**

Newman, Governors, O'Bannon, and Ruston halls are located to the east of University Boulevard, across from the academic buildings and adjacent to the Recreation, Fitness, and Wellness Center (RFWC) and Rice Library.

### **2. O'Daniel South**

This group of 10 apartment buildings is on the northeast side of campus, near the Office of Religious Life and Housing and Residence Life Services, which includes a community laundry room.

### **3. O'Daniel North**

Within this area of 11 apartment buildings is the Housing and Residence Life central office, mail center, and six community computers with printing station.

### **4. McDonald East**

These apartments offer easy access to Schutte Road or the main campus. Fraternity and sorority housing is located in McDonald East.

### **5. McDonald West**

This community has nine apartment buildings and the Residence Life Community Center, which includes a laundry facility, community space, computers, ATM, copy machine, and convenience store.

## **Resources**

Living on campus puts you close to USI resources including Rice Library, RFWC, athletic events, activities, professors, support services, and food service options, which are within walking distance for students. Free shuttle buses serve all areas of campus housing. By living on campus, you will benefit from being "in the know" about everything USI.

## **Housing and Residence Life Staff**

Each community has a full-time, live-in professional area coordinator (AC), experienced in working with students, and with an educational background that includes higher education, counseling, or human services. Area coordinators provide on-site facilities management, and ensure that programs and activities in your community support your involvement and connection to USI.

Your primary connection is your resident assistant (RA). An RA is a student-staff member selected for leadership skills, an ability to reach out to peers, and a capacity to connect students to the resources they need to be successful.

## **Involvement**

As you interact with others to form friendships, develop community, and schedule activities that you and your friends enjoy, you will be energized by the diversity of fellow students represented in the communities. You won't be disappointed when you look for ways to get involved.

## **Technology**

USI Housing and Residence Life offers you two ways to get the Internet connection you need. Direct Ethernet connections and wireless access allow you to stay in touch with family, friends, and new neighbors. This access also connects you to USI's powerful web site ([www.usi.edu](http://www.usi.edu)) and to the myUSI information portal.

## **Healthy Atmosphere**

Students living in housing are required to have all immunizations current prior to moving into University housing. The immunization form is included in the Admitted Student Packet sent by the Office of Admission and must be completed and submitted to the Student Health Center, 812/465-1250. Resident Assistants and various departments offer programs on health, nutrition, and fitness throughout the academic year.









## Get the Edge.

Each bedroom has its own private bathroom.  
No community showers here!

# CAMPUS LIVING: **options**

## How do I choose where to live?

- Visit the USI campus. Contact the USI Office of Admission at 812/464-1765 or toll-free at 800/467-1965 to arrange a campus visit or to register for a Southern Hospitality Day (campus visit days). You can also visit us on the web—[www.usi.edu/admission/schedule-a-visit](http://www.usi.edu/admission/schedule-a-visit).
- Take a USI Virtual Tour—[www.usi.edu/visit/virtualtour/](http://www.usi.edu/visit/virtualtour/).
- Carefully read the room descriptions in this brochure.
- Remember, residence halls are for first-year students only and they fill up quickly.

If you have questions, contact us at [living@usi.edu](mailto:living@usi.edu) or by telephone at 812/468-2000.\*

### ► Tobacco-free

The University of Southern Indiana is tobacco-free, including campus housing.



Tobacco-Free USI

### ► Substance-free

USI is committed to keeping all campus areas substance-free, which means that alcohol and drugs are not allowed in campus housing. A substance-free environment helps support academic success for USI students.

### ► Private Bedrooms

Private bedrooms are available to students at a higher cost. These rooms are available on a first-come, first-served basis.

### ► Quad Rooms

USI apartments and residence hall suites are designed for four people. Each has two bedrooms, two people to a bedroom. This is the most typical room configuration and the one selected by most of our students.

### ► Renter's Insurance

The University of Southern Indiana strongly advises that **personal renter's insurance be purchased by students living in housing**. USI shall not be directly or indirectly liable for loss or theft of personal property, or for damage or destruction of such property by fire, water, or other causes. Check your family's homeowner's insurance policy; college students living on campus may be covered.

### ► Living Learning Communities

First-year students may apply to be a part of our dynamic and interactive Living Learning Communities (LLCs), located in Ruston and O'Bannon halls. LLCs are programs designed to link the in-class and out-of-classroom experiences and help students make a smooth and successful transition to college life. A separate application is required. Details about the LLC program can be found on pages 7–8.

*\*If the housing application or roommate options do not support your gender identity, please contact our office at [living@usi.edu](mailto:living@usi.edu) to discuss a placement that is right for you.*







## Get the Edge.

Living Learning Communities are one of the best ways to make great friends.

# LIVING LEARNING Communities

**Living Learning Community (LLC)** students are immersed in a true living and learning environment. Residents live in close proximity to other students who share the same major or interest and attend classes together. Students select from nine LLC options: Business; Education; Exploring Majors; Global Community; Honors; English and Theatre Arts; Nursing and Health Professions; Social Justice; and STEM (science, technology, engineering, and mathematics). Different University departments sponsor each floor and assist in organizing programs, activities, and events highlighting various themes. Student staff members, Resident Assistants (RAs), are tied to an academic major or theme and many have been a part of the LLC. Each LLC has a distinct culture and personality. A one-hour seminar taught by sponsoring faculty creates a shared experience for students, enhancing positive bonds both in and out of the classroom. Students participating in LLCs tend to have a higher GPA than those who do not participate in the program.

**REMINDER:** Separate application required **in addition to** the Housing application and contract.

### LLCs provide many advantages:

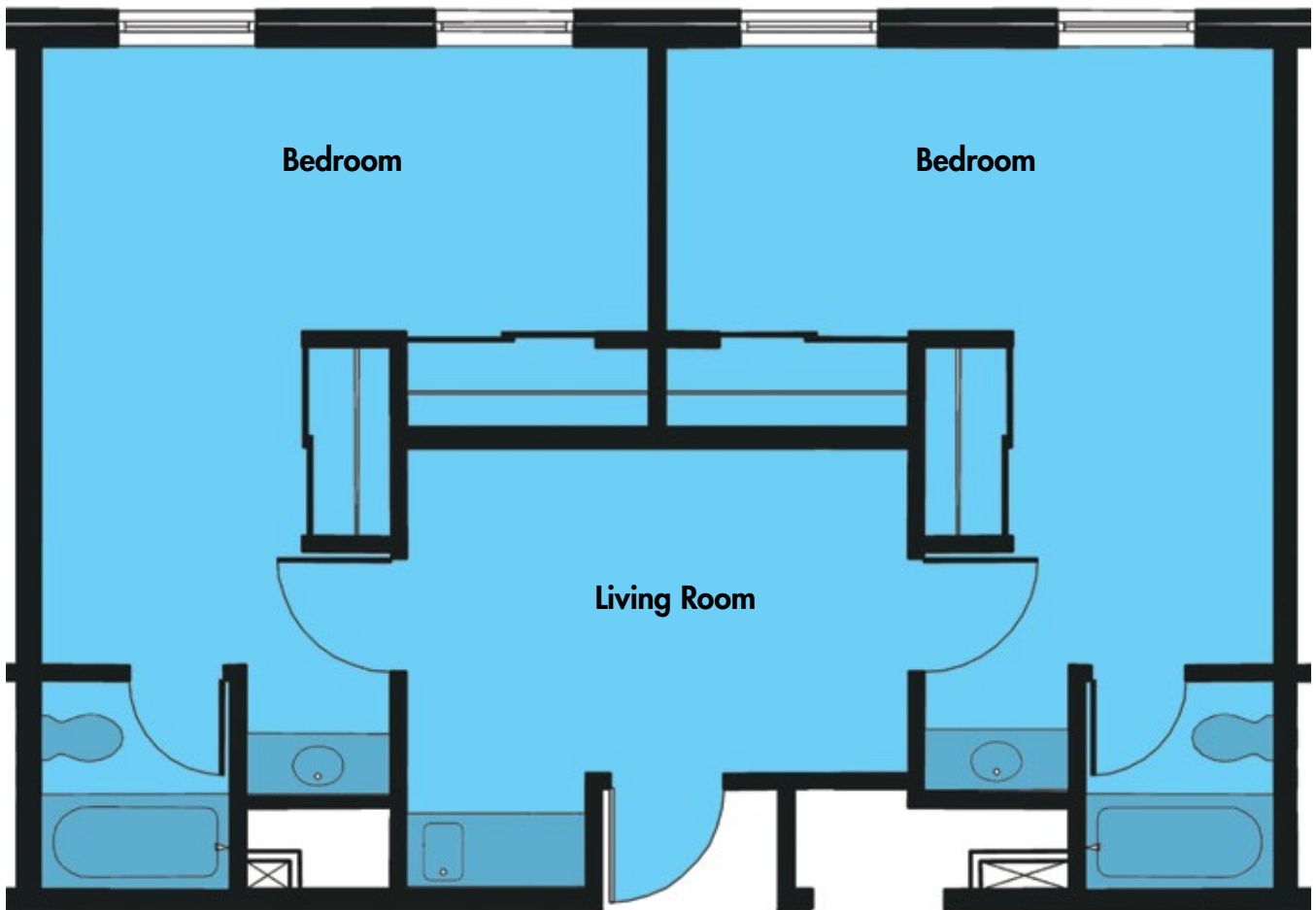
- Living with students of the same major or interest
- Common courses through seminar or block scheduling
- Built-in academic support through formal or informal study groups
- Programming around a central theme
- Link to sponsoring faculty and staff

**For more information** on any of the LLCs, contact Amy Price, Associate Director of Housing and Residence Life, [asprice@usi.edu](mailto:asprice@usi.edu), call 812/468-2000, or go to [www.usi.edu/res](http://www.usi.edu/res).

### Students can select from nine LLC options:

- Business
- Education
- Exploring Majors
- Global Community
- Honors
- English and Theatre Arts
- Nursing and Health Professions
- Social Justice
- STEM (science, technology, engineering, mathematics)

Most LLC rooms are designed for four people; however, singles are available (very limited quantity).



Newman Hall, Governors Hall, O'Bannon Hall, and Ruston Hall Floorplan





## Get the Edge.

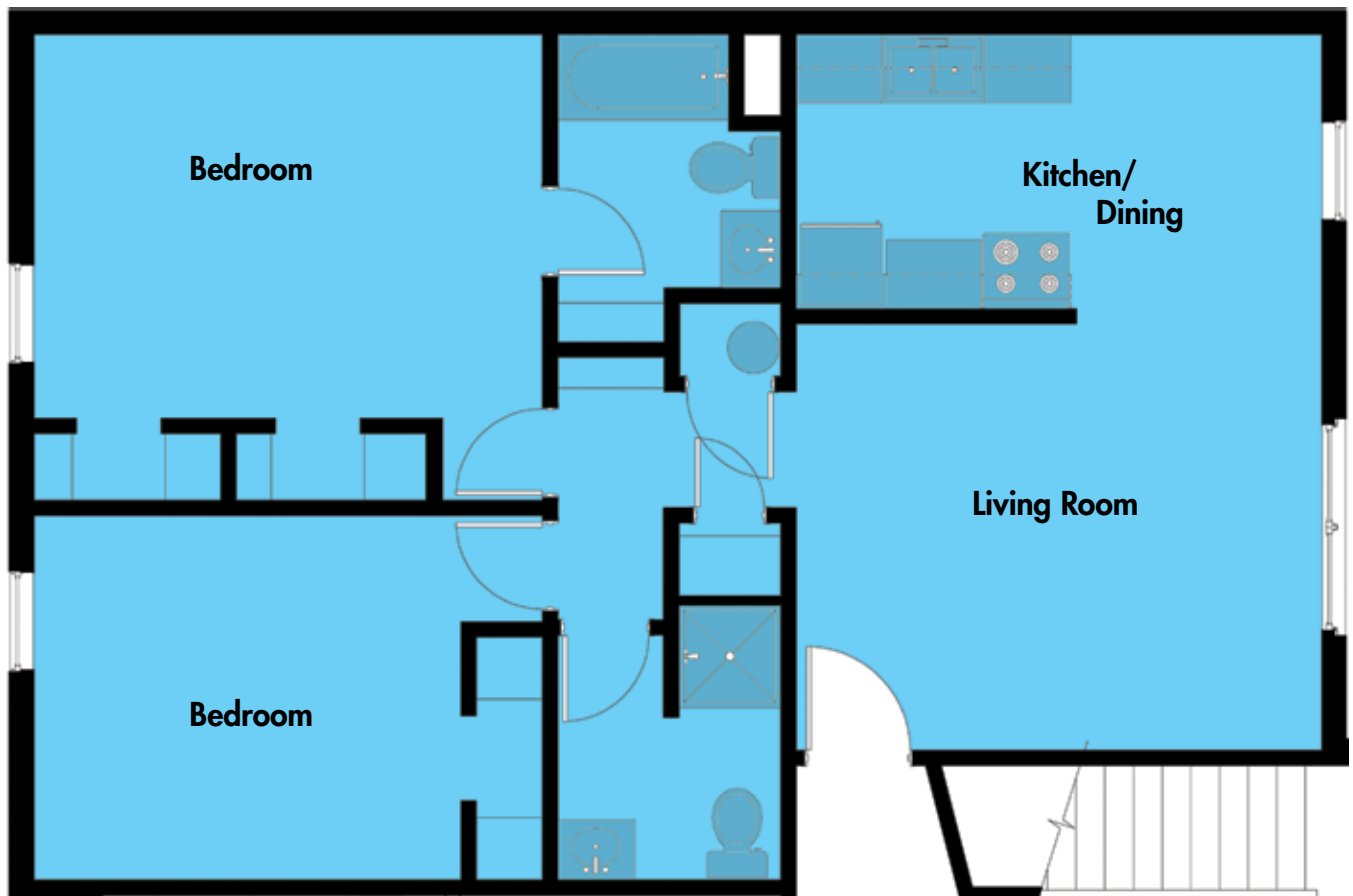
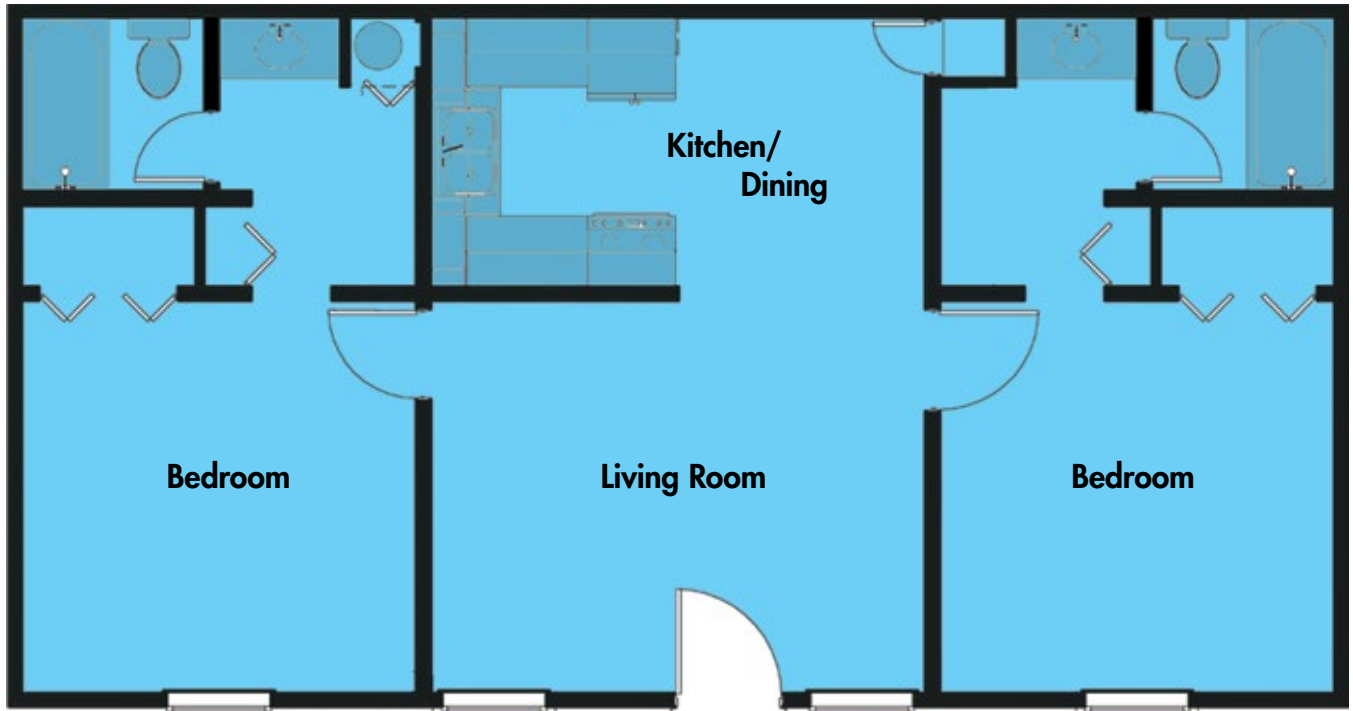
Each residence hall is equipped with a laundry facility and several places to hang out!

# COMMUNITIES AND ROOMS

## **Newman Hall, Governors Hall, O'Bannon Hall, and Ruston Hall**

Newman and Governors halls accommodate over 340 residents; O'Bannon and Ruston halls over 400. Men and women reside in separate suites. All four halls are freshman-only. Newman and Governors halls are in close proximity to the Recreation, Fitness, and Wellness Center and directly across the boulevard from Rice Library. O'Bannon and Ruston halls are near the Screaming Eagles Valley Complex and the Art Studio. Ruston and O'Bannon halls house first-year Living Learning Communities. Halls are available on a first-come, first-served basis, and tend to be a popular option for students.

- freshman-only buildings
- interior hallways
- suite-style layout
- two bathrooms in each two-bedroom suite
- large first-floor lounge in each hall
- additional lounge space on second and third floors (O'Bannon and Ruston halls)
- vending machines in each building
- laundry room
- living area includes couch, chair, and mini-kitchen area with sink, under-the-counter refrigerator (provided), and storage cabinets
- bedrooms have desks, chairs, and bunk/adjustable beds
- carpeting
- 695 square feet in two-bedroom suites
- overhead lighting
- ample outlets for individual lamps (halogen not allowed)
- individual temperature controls by suite
- four people per suite, two per bedroom, except in the one-bedroom wedge room
- all halls have six computer areas; rooms are equipped with Ethernet connections and wireless Internet access
- each resident has his/her own closet
- limited availability of one-person bedrooms (wedge rooms)
  - single twin bed
  - one closet
  - no living room







## Get the Edge.

Every apartment comes fully furnished with a kitchen and living room.

Plenty of room to spread out!

# COMMUNITIES AND ROOMS

## O'Daniel South and O'Daniel North Communities

O'Daniel South Apartment Community is home to over 650 residents and is the largest housing community. O'Daniel North Apartment Community is home to over 600 residents. Both communities house freshman to senior students and are home to many campus activities. Men and women are housed in separate apartment units. O'Daniel South also is home to USI's Office of Religious Life, Housing and Residence Life Services, the O'Daniel South volleyball court, and the Meditation Trail. O'Daniel North is home to the USI Housing and Residence Life Office (HRL), the mailroom for O'Daniel South and O'Daniel North residents, and the apartment community computers.

## McDonald West and McDonald East Communities

McDonald West Apartment Community, housing over 550 freshman to senior residents, is home to the Residence Life Community Center, which includes a large meeting space, laundry room, a basketball court, and sand volleyball courts. The McDonald East Apartment Community, where mostly junior, senior, and graduate students reside, is home to 360 residents and includes five buildings for Greek organizations. Both communities house men and women in separate apartment units.

- O'Daniel South consists of 10 apartment buildings; O'Daniel North consists of 11, and all apartments have exterior door entrances and a split bedroom layout
- within both complexes there are a limited number of apartment buildings that are reserved for freshman residents
- McDonald West consists of nine apartment buildings; McDonald East includes 13 apartment buildings
- McDonald West apartments offer exterior door entrances and a split bedroom layout
- McDonald East apartments have interior door entrances
- each bedroom has accompanying private bathroom
- each apartment is equipped with full kitchen, including range and oven, full-sized refrigerator/freezer, sink, garbage disposal, and cabinets (some McDonald East apartments are equipped with dishwasher)
- vending machines available throughout the complexes
- large laundry room in O'Daniel South, additional laundry facilities available in each apartment building in McDonald East community; a large laundry room is located in Residence Life Community Center in McDonald West
- O'Daniel North offers access to lounge areas in Residence Life center, with computer access
- living areas include couch, chair, end table, and coffee table
- dining areas equipped with dining table and four chairs
- bedrooms include two desks, two chairs, nightstand, dresser(s), and two twin beds with mattresses
- limited number of single-occupancy bedrooms that have a double bed
- carpet (some have wood laminate flooring)
- 700 square feet
- overhead lighting
- ample outlets for individual lamps (halogen not allowed)
- bedrooms equipped with Ethernet connections and wireless Internet access
- two air conditioning units—individually controlled (McDonald East provides central air conditioning)
- four people per apartment, two per bedroom

# FOOD SERVICE OPERATIONS

## Which Meal Plan is Right for Me?

Take a look at the variety of options below to choose a meal plan that is right for you. For more information go to [www.usi.edu/food](http://www.usi.edu/food) or call 812/464-1859.

Not interested in a meal plan, but still want to dine on-campus in a convenient way? Try Munch Money, our pre-paid account for food service. Munch Money, when added to the Eagle Access Card, will be granted an additional four to nine percent bonus to be used in food service operations.

## Located in University Center



For a relaxing dining experience, visit The Loft, located on the second floor of the University Center. The Loft features a theme bar, fresh salad bar, soups, pizza and pasta station, vegan and vegetarian options, and Hometown Market, offering a selection of hot entrees, rotisserie meats, potatoes, and a variety of vegetables for lunch and dinner. The Loft also offers breakfast each weekday morning and brunch on the weekends to complete your meal plan options.

Also located in UC



## DINING WITH A PLAN If you live in residence halls, these plans were created just for you.

### RED EAGLE PLAN | \$1,825

- 14 meals per week, up to three per day, in The Loft
- \$350 dining dollars per semester (for students who prefer to eat every day of the week in The Loft—breakfast, lunch, or dinner—and flexibility for retail dining at their leisure)

### WHITE EAGLE PLAN | \$1,825

- 12 meals per week, up to two per day, in The Loft
- \$425 dining dollars per semester (for students who prefer to eat most of their meals in The Loft—breakfast, lunch, or dinner—and flexibility for retail dining)

### BLUE EAGLE PLAN | \$1,825

- Nine meals per week, up to two per day, in The Loft
- \$590 dining dollars per semester (for students who prefer the most flexibility for choosing where and when they eat)

### RED EAGLE PLAN | WHITE EAGLE PLAN | BLUE EAGLE PLAN

Plan meals allow you to choose from breakfast Monday–Friday, brunch Saturday–Sunday, and dinner each evening in The Loft. Meals can be exchanged from a select menu at Burger King, Sub Connection, Cyclone Salads, and Archie's Pizzeria in the Eagle Express Convenience Store beginning at 7 p.m. each day.

**Note:** Meal plans are renewed automatically for Spring semester. To change your meal plan, visit the Eagle Access Card office or email [foodmealplans@usi.edu](mailto:foodmealplans@usi.edu) **prior** to the start of Spring semester. All unused Munch Money/Dining Dollars will roll over to the Spring semester, but will be forfeited at the end of Spring semester.

Students living in residence halls will need to choose a Red, White, or Blue Eagle Plan. If no choice is selected, the White Eagle Plan is selected automatically as default.





In three locations: the Link between Health Professions Center and the Science Center, in the Liberal Arts Center, and the Recreation, Fitness, and Wellness Center.



Located in the Wright Administration Building



Located in Rice Library



Starbucks and the Starbucks logo are registered trademarks of Starbucks US Brands, LLC

Located in the Residence Life Community Center



The EagleXpress Convenience Store is packed with many popular household and grocery items to meet your needs. You also can enjoy an old-fashioned pizza pie from Archie's Pizzeria EagleXpress location.

**If you live in on-campus apartments or commute from home, these plans are right for you.**

#### **TITANIUM | \$1,179**

- 70 meals per semester
- \$690 Munch Money plus nine percent additional funds bonus (for students who would enjoy an average of four Loft meals per week and also retail options)

#### **PLATINUM | \$899**

- 50 meals per semester
- \$505 Munch Money plus eight percent additional funds bonus (for students who would enjoy an average of three Loft meals per week and also retail options)

#### **GOLD | \$693**

- 31 meals per semester
- \$440 Munch Money plus eight percent additional funds bonus (for students who enjoy eating their meals at home with an occasional meal each week with us)

#### **PLEASE NOTE**

- Meal plan participants must present a valid USI Eagle Access Card for each transaction.
- Meal plans and Munch Money may not be transferred to another student. If it is discovered that a person is using a "borrowed" Eagle Access Card, Food Services will confiscate the card and the student(s) will be referred to the University for violations of the USI Student Rights and Responsibilities: A Code of Student Behavior.
- Meal plans officially begin on August 25, 2013, and end on May 7, 2014. Meal plans are not in operation during holiday break periods.







**Get the Edge.**

**Apply  
early!**

# WINTER, SUMMER, AND DISABILITY HOUSING

## Winter break housing

For safety and security reasons, and because the University is officially closed during a portion of the winter holiday period, University apartments and residence halls are closed from December 18, 2013, through January 9, 2014. The Residence Life Center is closed and mail service is held from December 21, 2013, through January 2, 2014.

Students wishing to stay during the winter break period must pay a \$150 fee, sign up by Friday, December 13, 2013 (online or at the Housing and Residence Life Center), and provide a compelling reason for needing to remain in housing during the break period. Approvals have included requests such as involvement in University-sponsored events, international residency, etc. **Residents with permanent addresses in Vanderburgh (IN), Warrick (IN), Henderson (KY), White (IL), Gallatin (IL), Posey (IN), or Gibson (IN) counties are not eligible to stay for the winter break.**

## Summer housing

University housing is available during the summer terms. Students wishing to reside in summer housing must do the following:

- Be enrolled in at least three hours each summer session and maintain this enrollment
- Fill out a Summer Housing and Residence Life Contract (available April 1, 2014)
- Adhere to all policies and procedures as outlined in the 2013-2014 Housing/Food Services Booklet and *Student Rights and Responsibilities: A Code of Student Behavior*
- Relocate to the designated summer housing area within 48 hours of being reassigned by the Housing and Residence Life Office

## Accommodations for students with disabilities

Housing and Residence Life is committed to providing access and opportunity for all students. The University complies with the Americans with Disabilities Act and will attempt to provide reasonable accommodations for individuals with disabilities. Room and roommate assignments can be modified at the discretion of the director.

In order for USI to serve you better, please do the following:

1. Indicate any special services you need on the Housing/Food Services Contract.
2. Students with a documented disability are asked to contact the USI Counseling Center, 8600 University Boulevard, Evansville, IN, 47712, or by telephone at 812/464-1961, in addition to submitting the housing contract.

While USI will make every effort to provide what is needed, requests for accommodations cannot be assured for students applying less than 60 days prior to the beginning of the term for which the accommodations are needed.

It is the policy of the University of Southern Indiana to be in full compliance with all federal and state non-discrimination and equal opportunity laws, orders, and regulations relating to race, sex, religion, disability, age, national origin, sexual orientation, or veteran status.







# LATE APPLICANTS, PAYMENTS, AND CONTRACTS

## Late applicants

Late applicants are placed with a "pending" status. While students placed in pending status may have a housing spot, some students may start the year in a temporary assignment.\* Placement is made when space is available.

\*Temporary assignment: Some students may start the year in a temporary placement, which will have the full array of amenities and services. Permanent assignments open up as the year begins, and most students are permanently placed in the first few weeks of the fall semester.

## Payments

Payments for room and meal plan are placed on your overall University bill and are due when tuition and other charges are due. Housing and meal plan charges will be listed separately on your bill. Housing pre-payment of \$200 is due at the time you sign your housing contract or the contract will not be accepted.

## Contracts

Read the contract terms and conditions carefully before electronically signing the contract. The contract terms and conditions are available at [www.usi.edu/res/onlineforms.asp](http://www.usi.edu/res/onlineforms.asp). If you have questions before you sign, contact us at 812/468-2000, [living@usi.edu](mailto:living@usi.edu), or [www.usi.edu/res](http://www.usi.edu/res).

Contracts are for the full academic year and any cancellations will result in the charges listed in the terms and conditions being applied to your student account.

### All students living in University housing sign a contract for the academic year

If you leave your residence before the end of the academic year in May 2014, you will be charged a contract breakage fee. If circumstances beyond your control require you to break your contract, you may appeal the contract breakage fee.

## Contract cancellation schedule

- From contract signature date to August 12, 2013: charged 50 percent of Fall 2013 housing charges AND charged 50 percent of Spring 2014 housing charges
- From August 13, 2013 to September 9, 2013 (first two weeks of class) and no-shows: charged 75 percent of Fall 2013 housing charges AND charged 50 percent of Spring 2014 housing charges
- After the first two weeks of class: charged 100 percent of Fall 2013 housing charges AND charged 50 percent of Spring 2014 housing charges

- Spring 2014 cancellations, no-shows, and those checking out during first two weeks of class: charged 75 percent of Spring 2014 housing charges
- Beginning third week of Spring 2014 classes: charged 100 percent of Spring 2014 housing charges

## Rates

The USI Board of Trustees and University administration reserve the right to change room and board rates at any time. Changes in housing/food services rates will not be considered grounds for contract termination.

See the food service section on page 13 for meal plan rates. Students assigned to the apartments will be billed \$50 Munch Money.

Housing rates per semester per student (contracts are for a full academic year):

### Residence Halls – Two Bedroom Unit

Four-person/two-bedroom suite \$2,015/semester

### Campus Apartments – Two Bedroom Unit

Four-person/two-bedroom apartment \$2,015/semester  
Two-person/two-bedroom apartment \$3,600/semester (limited availability)

### Campus Apartments – One Bedroom Unit (limited availability)

Two-person/one-bedroom apartment \$2,430/semester  
One-person/one-bedroom apartment \$4,515/semester (limited availability)

**Note:** In the event of a housing shortage, Housing and Residence Life reserves the right to place students in a temporary assignment. Once a permanent space is available, the resident will be required to move.

### Questions?

Call 812/468-2000,  
visit [www.usi.edu/res](http://www.usi.edu/res),  
or email [living@usi.edu](mailto:living@usi.edu)



# HOW TO APPLY AND TIMELINE

## How to Apply

**STEP 1: Apply** for housing through myUSI. A \$50 non-refundable application fee will be required electronically at time of application. Meal plan preferences must be made on the housing application. Any changes or questions regarding meal plan, go to [www.usifood.com](http://www.usifood.com) or call 812/464-1859. Roommate preferences are made at the time of application.

**STEP 2: Contract.** Sign your housing contract electronically when offered through myUSI. Contracts will be offered on a first-come, first-served basis, and will be offered through the student's USI email. All students will be required to pay a \$200 pre-payment to the student's account. Pre-payments must be made online by credit card at the time the contract is electronically signed. Remember, your contract cannot be accepted until the pre-payment has been made.

**STEP 3: Select** your bed space during your assigned appointment time through myUSI. Appointment times will be sent via USI email and are scheduled in contract-received order. The self assign option will take place during the first two weeks in June. Contracts are for the full academic year.

**NOTE:** This contract is an academic-year contract and is binding from the receipt of your contract and \$200 pre-payment on your housing charges through Wednesday, May 7, 2014.

## Application and Assignment Timeline

### 2013

#### JUNE

- 3-14** – Select your bed space during your assigned appointment time online.

#### JULY

- 15** – Notification to students who self-assigned – Assignments and roommate information will be sent on July 15 through USI email.

#### AUGUST

- 1** – Move-in information will be emailed to all assigned students. This mailing includes move-in dates and times, as well as information about important University services.
- 1** – Last day to apply for early arrival (\$20/night charge applies) – If you need to arrive earlier than the official opening date, you must request advanced approval in writing from the Housing and Residence Life Center by August 1, 2013. You must fill out the online form at [www.usi.edu/res](http://www.usi.edu/res). Students must have a valid University-related reason for early check in. Those without Housing and Residence Life approval will not be allowed to check in early.
- 17** – First day students can move in early – Services normally offered will not be available prior to the August 21, 2013, move-in date. Students approved to arrive early will be charged \$20/day prior to the official opening date.

- 21** – Move-in day for Living Learning Communities (LLC)

- 22** – University housing official check-in for Welcome Week participants (includes all freshmen and new transfer students)

- 23-25** – University housing official check-in for remaining residents

- 26** – 4 p.m. – Last date to check in before cancellation of contract and application of no-show fee – Room assignments will be held no later than 4 p.m. on the first day of class. If you anticipate arriving after classes begin, you must submit a written request to Housing and Residence Life and receive approval prior to August 28, 2013. Late check-ins that are not approved by Housing and Residence Life may result in a room assignment change or contract cancellation.

- 26** – First day of fall semester

#### SEPTEMBER

- 9** – Fall consolidation begins – During this time, students living in Housing and Residence Life apartments or suites that are not full are moved to new locations to maintain full occupancy. This is done to allow housing to begin rehabilitating apartments for the next semester, to discontinue the use of electricity to the newly vacated locations, and to keep living arrangements equitable.





## Get the Edge.

### 3 Simple Steps

- 1) Apply
- 2) Contract
- 3) Select

## NOVEMBER

- 26 – Sign-up to stay during winter break\*

## DECEMBER

- 2 – Housing Applications/Contracts 2014-2015 are available
- 13 – Last day to sign up to stay during winter break with no penalty
- 14 – Sign-up for winter break with \$50 penalty\*
- 18 – University housing closes for winter break

## 2014

### JANUARY

- 10 – University housing opens for spring 2014 semester
- 13 – First day of spring semester
- 27 – Spring consolidation begins – During this time, students living in Housing and Residence Life apartments or suites that are not full are moved to new locations to maintain full occupancy. This is done to allow housing to begin rehabilitating apartments for the next semester, to discontinue the use of electricity to the newly vacated locations, and to keep living arrangements equitable.

## MARCH

- 17-28 – Room selection for returning students for 2014-2015 academic year – Current residents can reserve their room during this time. An email with the exact dates will be sent out prior to room selection.

## APRIL

- 1 – Sign-up for summer housing begins

## MAY

- 7 – Last day of spring 2014 semester
- 7 – University housing closes—all residents must check out by 6 p.m.

\* Residents with permanent addresses in Vanderburgh (IN), Warrick (IN), Henderson (KY), White (IL), Gallatin (IL), Posey (IN), or Gibson (IN) counties are not eligible to stay for the winter break.



Campus Legend

- AE Applied Engineering Center
- AS Art Studio
- BT Bent Twig Outdoor Education Center
- H. Amphitheatre
- B. Boleman #3 School
- C. Breckinridge Cabin
- D. Eicher Barn
- E. Grimes Haus
- F. Herb Garden
- G. Restrooms
- H. Westwood Lodge
- Business and Engineering Center
- Center Hall (UC 233)
- Ceramic Center
- Children's Learning Center
- Couch/Reiner Hall (ED 1101)
- Education Center
- Forum Lecture Hall (FA 1, 2, and 3)
- Forum Wing
- USI Foundation
- Grounds Center
- Health Professions Center
- I.U. School of Medicine-Evansville (HP 3026)
- Kleymeyer Hall (LA 0101)
- Liberal Arts Center
- Mallie Studio Theatre (LA 0105)
- McCachon Art Center/Pace Galleries (LA 0155)
- Michell Auditorium (HP 1002)
- OC Robert D. Orr Center
- PA Physical Activities Center (PAC)
- PP Physical Plant Service Center
- PUB Publishing Services Center
- FC Recreation, Fitness, and Wellness Center
- RES Fair Residence Life Center
- RL Residence Life Community Center
- SB David L. Rice Library
- SC Security Building
- SS Support Services Building
- TC Technology Center
- UC University Center
- WA Byron C. Wright Administration Building

- Bicycle Path
- Blue Emergency Phone
- Bus Stop

The off-campus recreational and varsity softball fields can be reached by traveling south on Schulte Road, then west on Broadway 1/4 mile; see map inset.

Under Construction

Teaching Theatre



Housing and Residence Life  
8600 University Boulevard  
Evansville, Indiana 47712  
www.usi.edu

Housing Legend

- RES Fair Residence Life Center
- RC Residence Life Community Center
- RS Residence Life Service Center
- Baker Building-McDonald East
- Boyl Building-O'Daniel North
- Bigger Building-O'Daniel South
- Boon Building-O'Daniel South
- Bowen Building-O'Daniel North
- Branch Building-McDonald West
- Branch Building-O'Daniel North
- Chase Building-McDonald East
- Chase Building-O'Daniel North
- Dunning Building-O'Daniel South
- Durbin Building-McDonald West
- Gates Building-O'Daniel North
- Gray Building-McDonald East
- Goodrich Building-McDonald West
- Governors Hall
- Hammond Building-McDonald East
- Harly Building-McDonald West
- Hendricks Building-O'Daniel South
- Hendricks Building-McDonald East
- Hovey Building-McDonald East
- Jackson Building-McDonald West
- Jennings Building-O'Daniel South
- Lane Building-McDonald East
- Leslie Building-O'Daniel North
- Marshall Building-McDonald West
- Mathews Building-McDonald East
- McGray Building-McDonald West
- McNair Building-O'Daniel North
- Morton Building-McDonald East
- Mout Building-McDonald East
- Newman Hall
- Noble Building-O'Daniel South
- O'Bannon Hall
- Orr Building-O'Daniel North
- Porter Building-McDonald East
- Ralston Building-McDonald West
- Ray Building-O'Daniel South
- Ruston Hall
- Saletto Building-McDonald West
- Schickler Building-O'Daniel North
- Townsend Building-O'Daniel North
- Wallace Building-O'Daniel South
- Walsh Building-O'Daniel North
- Whitcomb Building-O'Daniel South
- Willard Building-McDonald East
- Williams Building-McDonald East
- Wright Building-O'Daniel South

