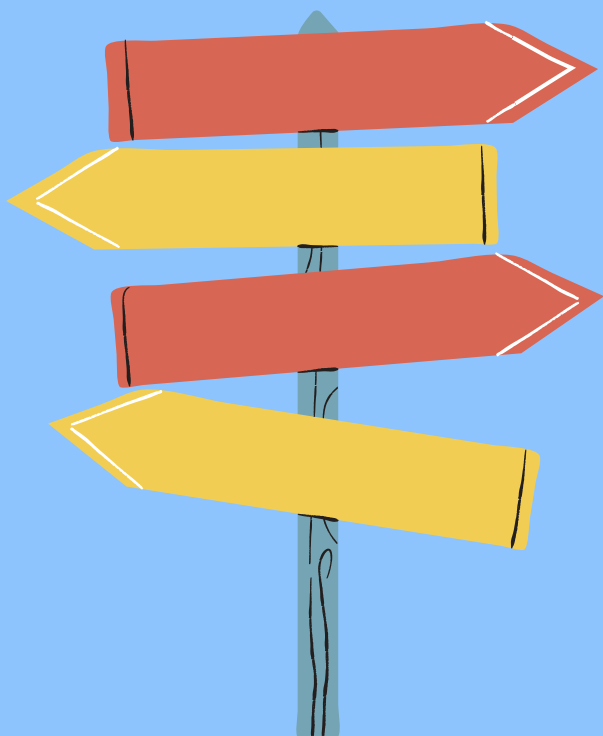


UNIVERSITY OF SOUTHERN INDIANA PANHELLENIC



A GUIDE TO
FORMAL SORORITY
RECRUITMENT
FALL 2022

FRATERNITY AND SORORITY LIFE

Welcomes You!

CONTACT INFO:

VP of Recruitment

Emily Papandria
epapandria@eagles.usi.edu

Panhellenic President

Brooklyn Wernert
bawernert@eagles.usi.edu

Director of Rho Sigmas

Ava Hoffman
amhoffman1@eagles.usi.edu



@usi.fsl



www.usi.edu/fsl

TABLE OF CONTENTS

The USI Panhellenic Council.....	4
Panhellenic Creed.....	5
PNM Bill of Rights.....	6
Recruitment Counselors.....	7

Recruitment Weekend Schedule

Preparation.....	8
Day 1.....	9
Day 2.....	10
Day 3.....	11
Bid Day.....	12
Recruitment Eligibility.....	13

Chapter Spotlights

Alpha Sigma Alpha.....	14
Alpha Sigma Tau.....	15
Delta Zeta.....	16
Gamma Phi Beta.....	17
Sigma Sigma Sigma.....	18

Frequently Asked Questions.....	19
---------------------------------	----

THE USI PANHELLENIC COUNCIL

President

BROOKLYN WERNERT

Executive Vice President

ALEXA ADKINS

Vice President of Recruitment & Extension

EMILY PAPANDRIA

Vice President of Programming

KYLEIGH BLUM

Vice President of Scholarship & Education

ABBIE KEEN

Vice President of Internal Affairs

GRACE MARSHALL

Vice president of Public Relations

CHLOE SMITH

Vice President of Philanthropy & Community Service

REILLY ROBERTS

Director of Recruitment Counselors

AVA HOFFMAN

PANHELLENIC CREED

We, as Undergraduate members of Women's Fraternities, stand for good scholarship, for guarding of good health, for maintenance of fine standards, and for serving, to the best of our ability, our college community. Cooperation for furthering fraternity life, in harmony with its best possibilities, is the ideal that shall guide our fraternity activities.

We, as Fraternity Women, stand for service through the development of character, inspired by the close contact and deep friendship of individual fraternity and Panhellenic life. The opportunity for wide and wise human service, through mutual respect and helpfulness, is the tenet by which we strive to live.

PNM BILL OF RIGHTS

Every PNM has the right to...

- Be treated as an individual
- Be fully informed about the recruitment process
- Ask questions and receive true and objective answers from Rho Sigmas and members
- Be treated with respect
- Be treated as a capable and mature person without being patronized
- Ask how and why and receive straight answers
- Have and express opinions to Rho Sigmas
- Have inviolable confidentiality when sharing information with Rho Sigmas
- Make informed decisions without pressure from others
- Be fully informed about the NPC Unanimous Agreements implicit in the Membership Recruitment Acceptance Binding Agreement (MRABA) signing process
- Make one's own choices and decisions and accept full responsibility for the results of that decision
- Have a positive, safe, and enriching recruitment and new member experience

RECRUITMENT COUNSELORS

A Recruitment Counselor, better known as a Rho Sigma, is a member of the Panhellenic community who has chosen to disassociate from her own Chapter to help unbiasedly lead a group of PNM's through the formal recruitment process

What you need to know about your Rho Sigma:

- You will meet your Rho Sigma at the informational sessions before the weekend
- She is SO excited to meet you! She has been training for this position and could not be more excited to guide you through the recruitment process
- Your Rho Sigma is a resource for you at all times! Whether you have a question about what to wear to rounds, how to get to class, or you are struggling with adjusting to life away from home, your Rho Sigma will be there for you before, during, and after recruitment.
- Your Rho Sigma has disassociated from her Chapter to be an unbiased resource for you. Please do not try to reveal her affiliation before she tells you on Bid Day.
- Your Rho Sigma was chosen from a competitive pool of applicants. We love her and hope you do too!

DAY 1- DEVELOP IN SISTERHOOD (9/16).

Time: 4:30 p.m.-10:40 p.m.

The "Develop in Sisterhood" Round, is essentially an open house. Each PNM will visit the Five participating sororities for a 40 minutes meet-and-greet event. During this time, PNM's will get a general overview of each chapter and the membership requirements.

DAY 2- PHILANTHROPY & SISTERHOOD (9/17).

Time: 12:00 p.m.-7:00 p.m.

Philanthropy Round is the first day of invitations to recruitment events. Each PNM may visit up to four parties lasting 40 minutes each. In this round, the PNM will learn more about the philanthropic endeavors of the organizations they are invited back to. They will also learn more about the bond of sisterhood that makes the sorority experience different than other organizations.

DAY 3- PREFERENCE ROUND (9/18).

Time: 8:30 a.m-3:00 p.m.

Preference Round consists of each PNM visiting up to two events lasting 60 minutes each. The sorority members will explain to PMNs what it means to be a member of their sorority and what their sorority could offer the PNM. This round provides the deepest level of insight for the PNM to help pick their chapter. During this round, Panhellenic encourages PNMs to think back on the previous rounds and recall what they liked best about these sororities and why they would choose to join a particular group.

When choosing a sorority, keep things in perspective

BID DAY (9/18)

Time: arrive by 5:00 p.m.

Bid Day, which occurs on the same day as the preference round, is when PNMs may receive up to one bid (invitation to join) from a chapter. If the PNM accepts the bid, they will be a new member of that chapter from that point forward.

However, new members will not be initiated into the chapter until weeks after Bid Day.



RECRUITMENT ELIGIBILITY

To be eligible for the Panhellenic sorority recruitment you must:

- Be enrolled as a full-time, degree-seeking student at USI.
- Most chapters have, at least, a minimum **2.6** GPA; please note, that some sororities have a higher GPA requirement.
- Register for recruitment via the online form.
- Pay the \$30 **non-refundable** recruitment registration fee.
- **Plan to attend all recruitment events.** Missing any part of recruitment makes it more difficult for the women in each sorority to get to know you and may limit the ability to place you in an organization.

ALPHA SIGMA ALPHA

- Founded: 1901
- Colors: Crimson, Pearl White, Palm Green, & Gold
- Values: Balance, Generosity, Integrity, Learning, Relationships, Responsibility, Growth, Enjoyment
- Philanthropies: Special Olympics, Riley's Children's Hospital, The ASA Foundation, Girls on the Run, Evansville Rescue Mission



ALPHA SIGMA TAU

- Founded: 1899
- Colors: Emerald Green & Victory Gold
- Values: Excellence, Intellect, Graciousness, Respect, Connections
- Philanthropies: Women's Wellness Initiative, Girls Who Code, Dress for Success, YMCA



DELTA ZETA

- Founded: 1902
- Colors: Green & Rose
- Values: Friendship, Curiosity, Generosity, Citizenship, Empowerment, Belonging
- Philanthropies: Starkey Hearing Foundation, American Society for Deaf Children, Painted Turtle Camp, Ronald McDonald House

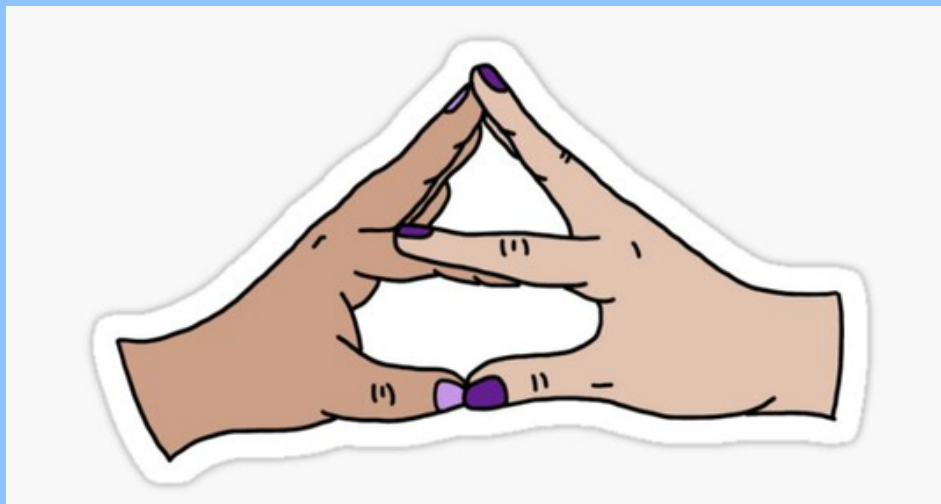


GAMMA PHI BETA

- Founded: 1874
- Colors: Blush, Brown, & Mode
- Values: Love, Labor, Learning, Loyalty
- Philanthropies: Girls on the Run, Pirouette Project

SIGMA SIGMA SIGMA

- Founded: 1898
- Colors: Royal Purple & White
- Values: Wisdom, Power, Faith, Hope, Love
- Philanthropies: March of Dimes, The Sigma Sigma Sigma Foundation



FREQUENTLY ASKED QUESTIONS

-How do I know if joining a sorority is right for me?

The best way to know if being a sorority woman is right for you is to participate in recruitment. You will get to meet sorority women, ask questions, and learn about the benefits and expectations of membership to make an informed decision if the experience is right for you.

-How do you know which sorority is right for you?

When you go through recruitment, it can be difficult knowing which chapter is best for you. Pay attention to how you feel visiting each chapter. Consider these questions:

- Do you feel a connection to members you meet?
- Do you feel listened to?
- Can you see yourself as a member of that chapter?

Trust your own feelings and not the opinions of others

-What is it like to go through recruitment?

When you meet each chapter through recruitment you'll learn about their sisterhood, service and philanthropy opportunities, academic support, personal development opportunities, and more.

-Why else should I join other than to have fun?

Sorority membership comes with many benefits. You find a group of supportive women to develop lifelong relationships. You develop skills like time management, leadership, communication, and more. You find academic support. And you get to volunteer and fundraise for local and national organizations.

-Is it hard to balance a job, a sorority, and school?

While trying to juggle all of your responsibilities can be difficult, sorority can help teach you skills like time management through educational workshops. These workshops and experiences can give you actionable steps to finding a balance between your job, sorority, and school.

-Is the stereotype of sorority shown in movies true?

What sorority is like in movies and what it is like, in reality, are totally different in real life. The sorority community has women who are strong, smart, leaders who come from many different backgrounds.