



The Southern Indiana Dementia Workgroup

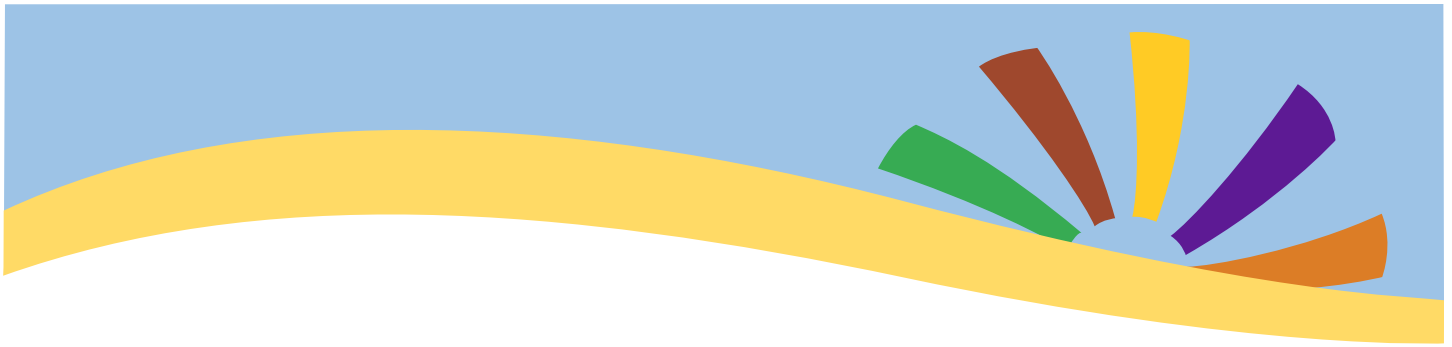
We are seeking interested persons who have experienced dementia as patients, care partners, clinicians, or researchers to join the Southern Indiana Dementia Workgroup.

- * The primary mission of this group is to create & support a community of stakeholders interested in identifying and improving the research outcomes in dementia.



For more information, please contact **Dr. Paul Arthur**, PArthur@usi.edu

This project has been approved by USI's IRB under the provision of Federal Regulations 45 CFR 46.
Reference # 2021-110NH. www.usi.edu/ospra rcr@usi.edu



- * The Southern Indiana Dementia Workgroup (SIDW) was designed to develop meaningful, generative partnerships between people living with dementia and care partners and clinical, research, and dementia education communities. As a patient-centered capacity building project, SIDW initiation goals include (1) recruitment of a cohesive and diverse workgroup, and (2) preliminary identification of outcomes most important to the Southern Indiana dementia community.

- * We believe productive, sustained partnerships are dependent on shared responsibilities, decisions, resources, and accolades. This includes, but is not limited to project compensation, outcomes, and dissemination.

- * Present limitations identified by the workgroup include size (3), representation, and lacking diversity. We are particularly interested in learning from persons living with dementia and their care partners.

- * We plan to hold monthly meetings, presently via Zoom, to further grow our capacity as a productive workgroup.

For more information, please contact **Dr. Paul Arthur**, PArthur@usi.edu

This project has been approved by USI's IRB under the provision of Federal Regulations 45 CFR 46.
Reference # 2021-110NH. www.usi.edu/ospra rcr@usi.edu