

Doctor of Education (EdD) in Educational Leadership

The 100% online Doctor of Education (EdD) in Educational Leadership will develop the tools you need to become an effective administrator and leader in today's educational environments. Our flexible program is designed for working professionals who have completed a master's degree from an accredited university in education or a related field. P-12 education is a common theme throughout the program. The knowledge, skills, and dispositions addressed in the program are transferable to education-related positions in other institutions and agencies.

CONCENTRATION AREAS:

- Administrative Leadership (leads to school district-level licensure)
- Pedagogical Leadership (does not lead to licensure)

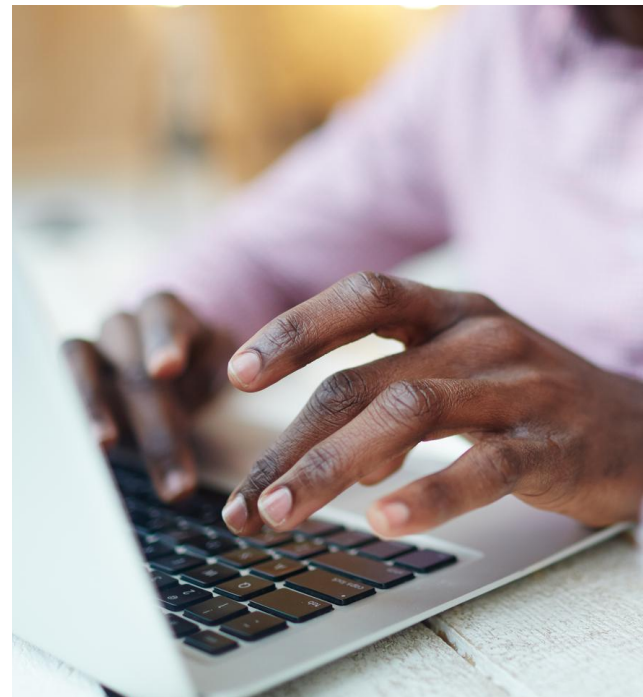
100% ONLINE

PROGRAM DELIVERY

Courses within the EdD program are offered entirely online using a learning management system. You will need access to a reliable computer with internet.

HOW YOU WILL BENEFIT FROM THE PROGRAM

Our affordable and convenient program gives you control over your schedule. With our 100% online EdD degree, you will become an integral part of transforming leaders, organizations, and communities through focused, flexible study addressing real-world problems and issues. A unique characteristic of the program is a curriculum in which each course is community-based. The course content is connected to your community and you will be applying your knowledge and theories to practical, real-life settings.



EdD

PROGRAM CURRICULUM

The program is cohort-based, with fall-only admission. Students take two classes each semester and one class in the summer. The program unfolds over four years. Years one and two of the program are the core and the research methods sequence. Year three focuses on the academic concentration, and the dissertation is the emphasis of year four. The program is a 60 credit hour, post-master's degree.

ADMISSION REQUIREMENTS

Applicants must be admitted to a graduate study under University graduate policies and then be accepted into the specific EdD concentration track. In addition to the requirements for admission to graduate study at USI, admission to the EdD program requires the following:

- A written essay answering questions regarding your profession and goals. Specific questions can be found online
- Three references - one must be an employment supervisor and the other two must be professional references
- A current resume/curriculum vitae
- Transcripts for all post-secondary coursework



Teacher preparation programs are approved by the Indiana Department of Education and are accredited by the Council for the Accreditation of Educator Preparation.

APPLY TODAY!

Visit our website at usi.edu/online-edd to inquire about the program and speak to an EdD representative.



FOR MORE INFORMATION

Dr. Tori Colson
Program Chair
tshoulders@usi.edu
812-465-7044

Education Center
University of Southern Indiana
8600 University Boulevard
Evansville, IN 47712

The University of Southern Indiana is committed to principles of equal opportunity and affirmative action.



USI Online Learning



@usionlinelearning