

Applicant Funnel

In keeping with its access mission, USI had the highest fall 2009 acceptance and enrollment rates for first-time freshmen among Indiana's state-funded, four-year universities. USI also had the highest acceptance rate for transfer students.

	First-Time Freshmen		Transfer Students	
	Accepted	Enrolled	Accepted	Enrolled
Southern IN (USI)	88%	45%	78%	58%
Ball State (BSU)	74%	44%	64%	67%
Indiana State (ISU)	68%	36%	59%	44%
Indiana (IU)	73%	31%	60%	48%
Purdue (PU)	73%	30%	52%	60%

Competition for Students

All universities face competition for students, and USI is no exception. Of the students ultimately enrolling at USI, a significant percentage also sent SAT scores to IU Bloomington and/or another Indiana university.

% of USI Students Sending SAT Scores to...

45%	IU Bloomington
39%	Ball State
30%	Purdue - W. Lafayette
29%	Indiana State University
26%	IUPUI
20%	University of Evansville
13%	Vincennes University
12%	University of Indianapolis

Entering Freshmen Characteristics

Over the past ten years, USI has attracted increasingly better prepared students while still providing high access.

Freshmen	USI	BSU	ISU	IU	PU
Avg. SAT Verbal	476	524	464	576	555
Avg. SAT Math	486	529	469	599	606
Avg. ACT Composite	21	22	19	27	26
HS Rank - Top 10%	12%	16%	9%	34%	35%
HS Rank - Top Half	64%	87%	64%	96%	95%
Live on campus	62%	92%	68%	98%	89%

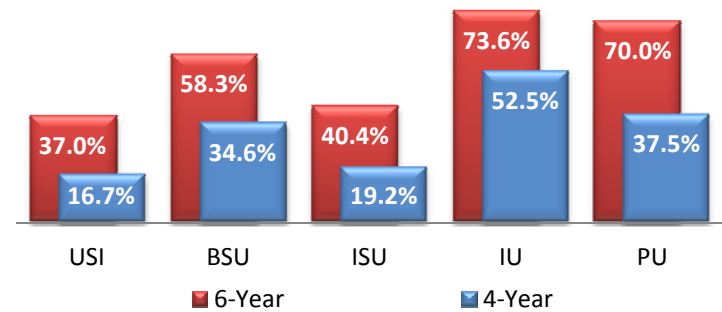
Undergraduate Characteristics

USI has the highest percentage of part-time students, and the percentage of "non-traditional" students, those age 25 or older, is significantly higher than other state-funded universities except ISU. USI also has the highest percentage of commuter students among the five state-funded four-year institutions.

Undergraduates	USI	BSU	ISU	IU	PU
Female	59%	52%	51%	50%	42%
Ethnic Minority	11%	16%	24%	20%	21%
Age 25 or Older	19%	11%	23%	4%	4%
Part-Time Status	17%	7%	14%	4%	5%
Live on campus	28%	44%	37%	36%	34%

Graduation Rate

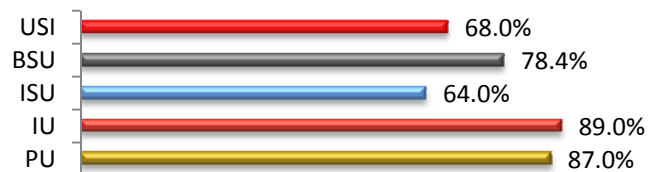
USI's graduation rate has increased over the past ten years and a continued effort to raise the rate is one of the goals of USI's new strategic plan.



Freshmen Retention

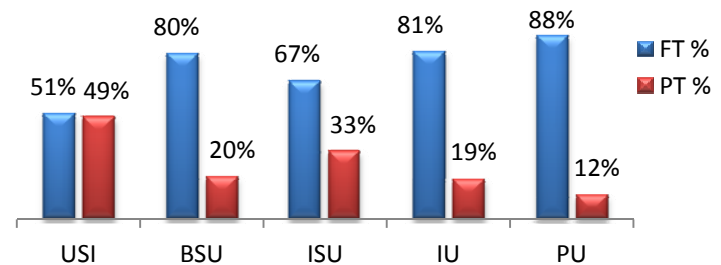
The USI one-year retention rate for first-time, full-time degree seeking freshmen has increased over the past few years, with a record high of 68% for the Fall 2008 entering class.

Fall '08 to Fall '09 Retention



Faculty

Full-time faculty comprise nearly 50% of USI's teaching staff. Even with USI's reliance upon part-time faculty, the bulk (70 percent in fall 2009) of credit hours taught was delivered by full-time faculty.



State Appropriation Funding and Tuition

USI is an efficient university. Despite receiving the lowest state appropriation per student and having the lowest tuition rate of the four-year state institutions, USI is able to provide a high quality educational experience for its students.

