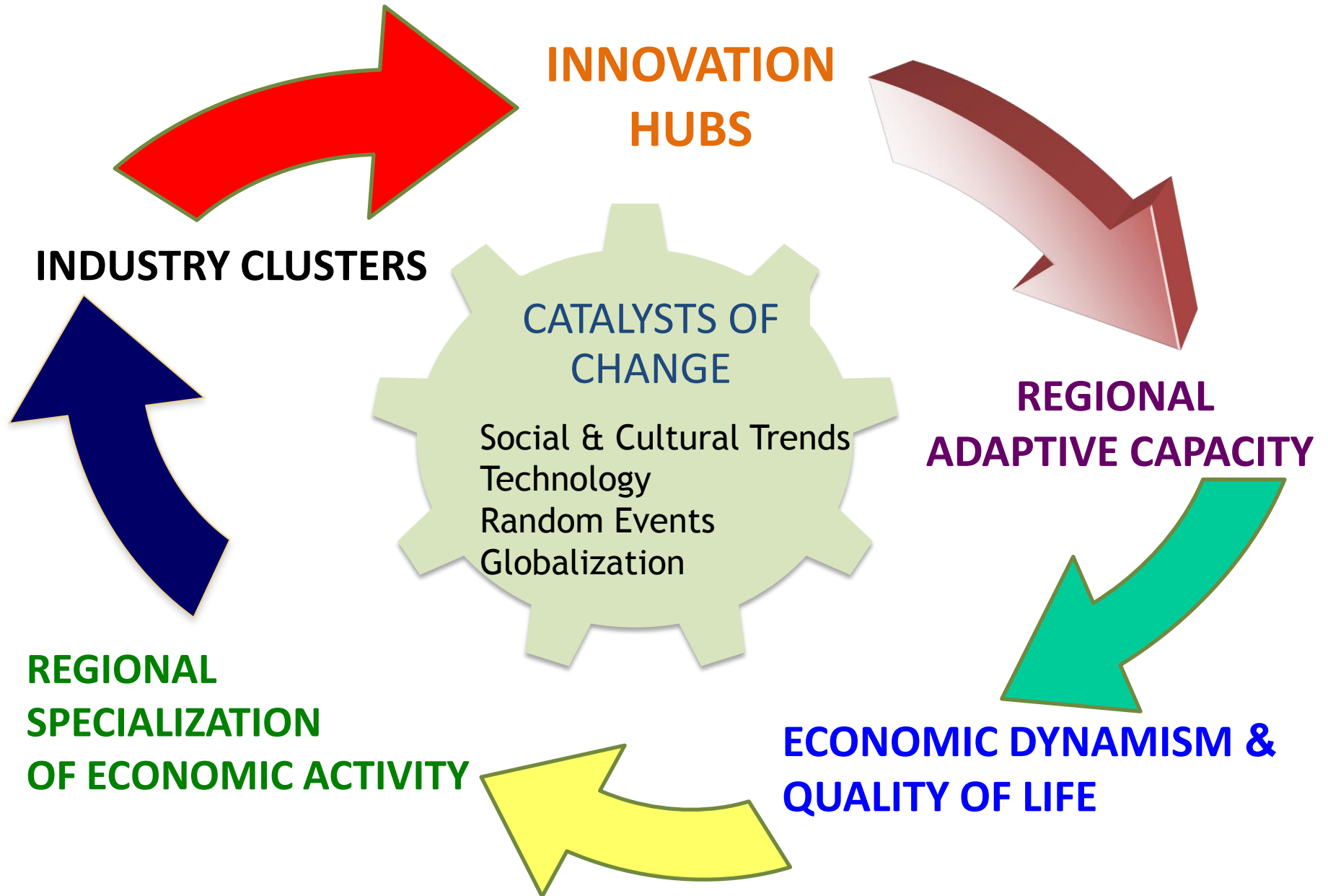
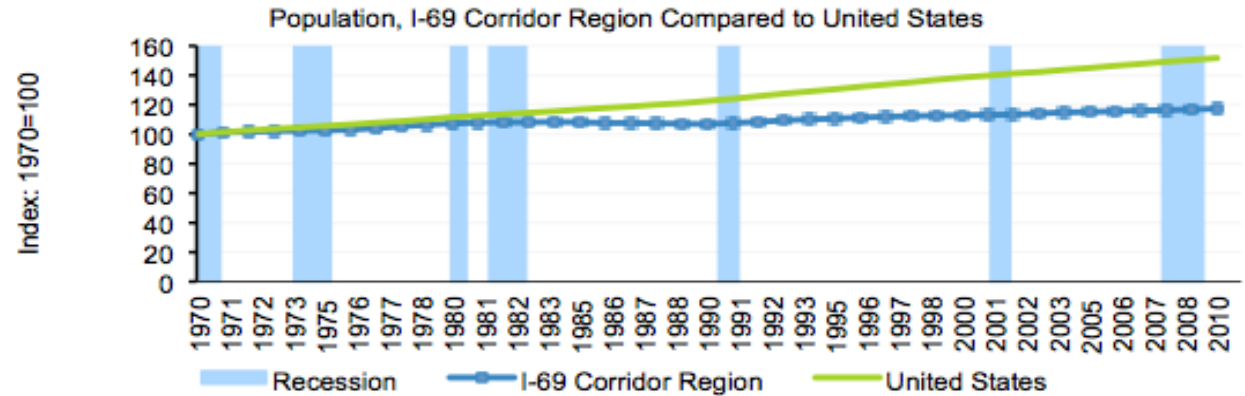


Drivers of Regional Economic Success

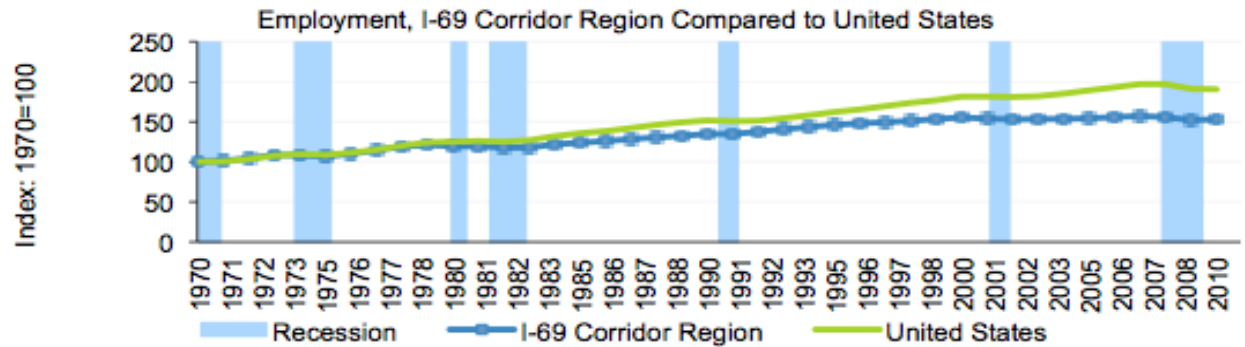


Growth Path of Population, Employment, and Personal Income: I-69 Corridor Region compared to the U.S., 1970-2010

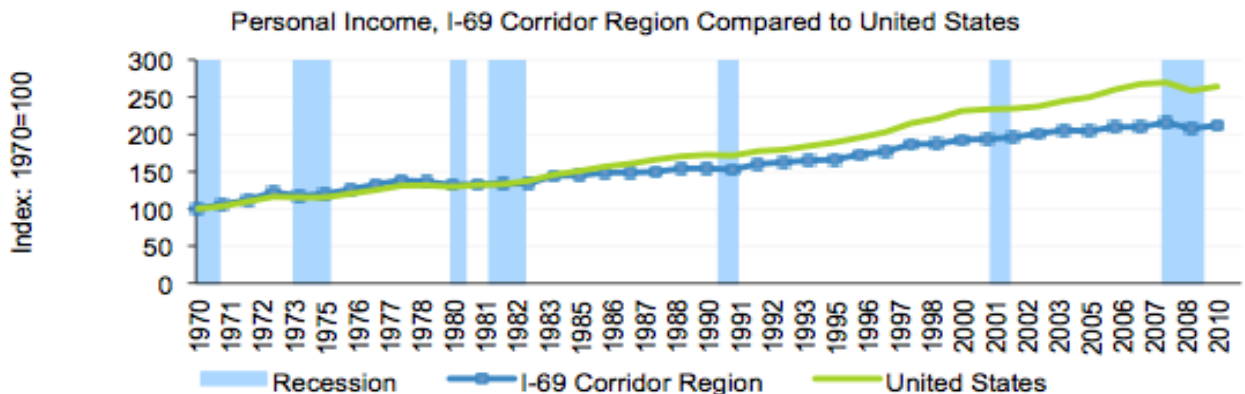
- From 1970 to 2010, population in I-69 Corridor Region grew by 17% compared to 52% for the United States.



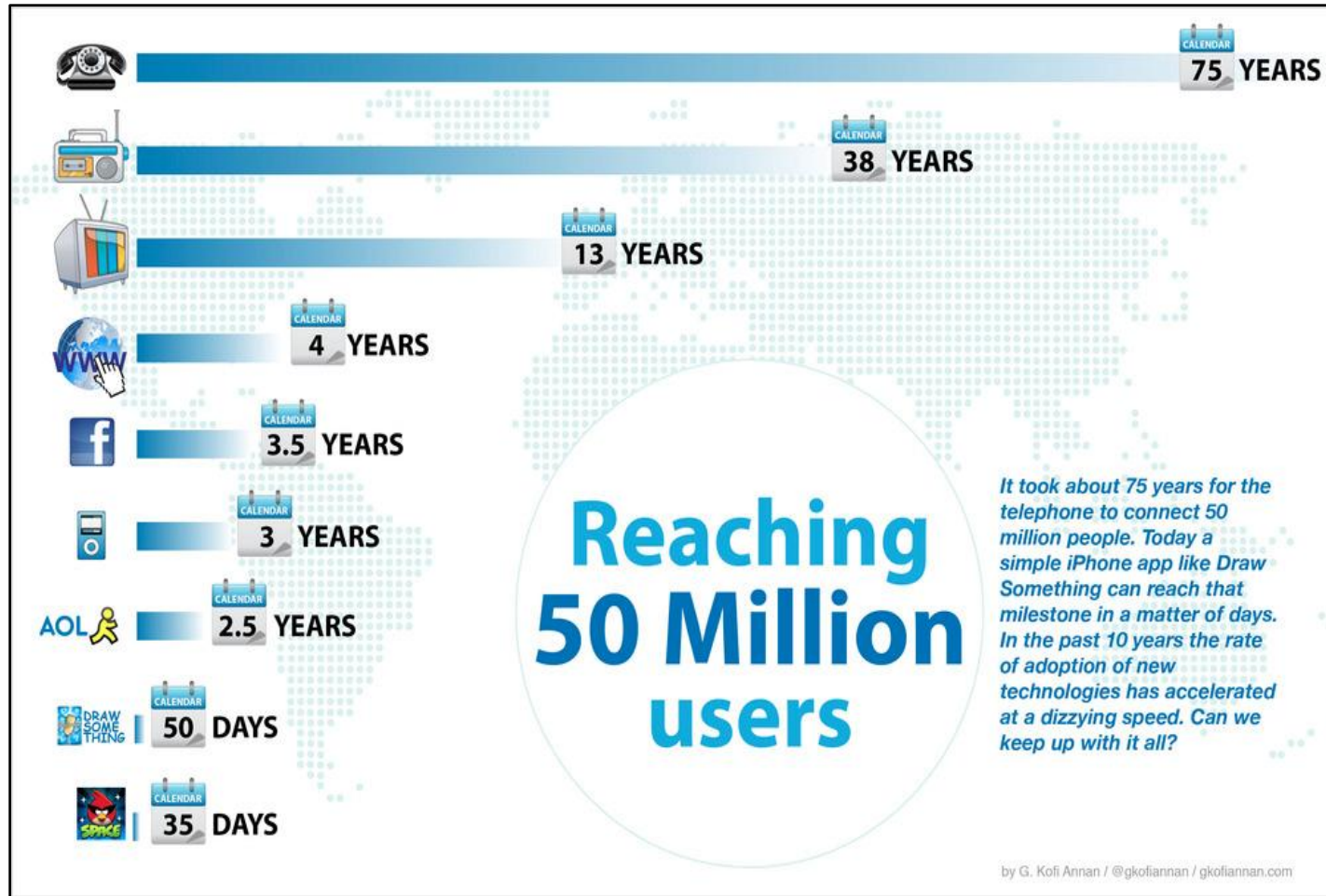
- From 1970 to 2010, employment in I-69 Corridor Region grew by 53% compared to 90% for the United States.



- From 1970 to 2010, personal income in I-69 Corridor Region grew by 112% compared to 164% for the United States.



PACE OF CHANGE



Key Emerging Technologies and Applications: What are the likely impacts on the I-69 Corridor Region?

