



The Class of **2004**

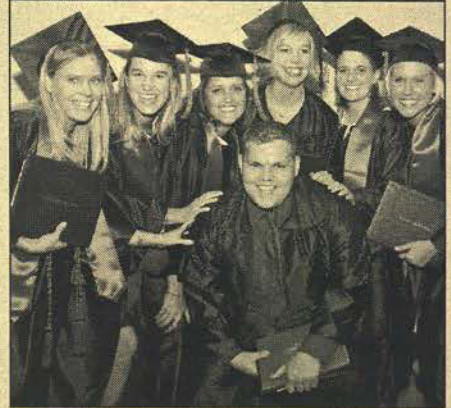
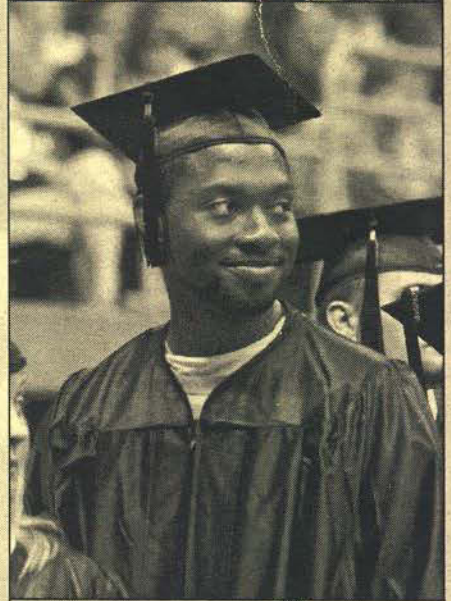
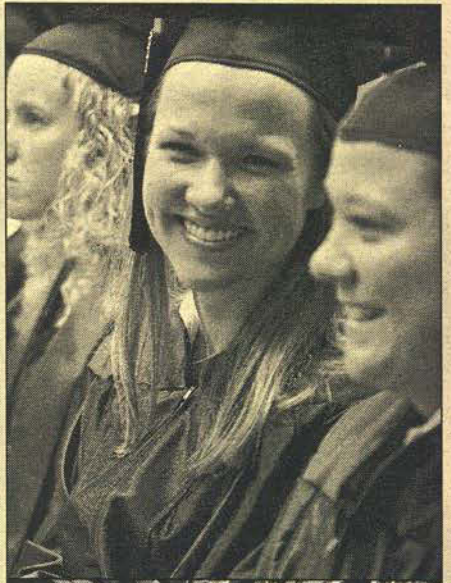


TABLE OF CONTENTS

Table of Contents	1
Registrar's Summary	2
Executive Summary	2
Salary Statistics	5
School of Business	7
Bower-Suhrheinrich School of Education & Human Services	15
School of Liberal Arts	21
School of Nursing & Health Professions	28
Pott School of Science & Engineering	36
Extended Services	38
Graduate/Professional School Participation	39

THE CLASS OF 2004

PROFILE FROM THE OFFICE OF THE REGISTRAR

The Office of the Registrar reports the following demographic information regarding the Class of 2004. It is included to provide a useful background for other data contained in this report.

- Between December 2003 and August 2004, 1,452 degrees and certificates were awarded to 1,416 individuals.
- Baccalaureate degrees were awarded to 1107 graduates: 864 Bachelor of Science; 144 Bachelor of Arts; 37 Bachelor of Social Work; 53 Bachelor of Science in Nursing; and 9 Bachelor of General Studies.
- Among the graduates, 94.3 percent identified themselves as white, non-Hispanic ethnic origin, 4.4 percent classified themselves as minorities, and 1.3 percent as non-resident aliens.
- Among the graduates, 64.1 percent were female, up from 63.1 percent in 2003.
- Graduates whose county of origin was Gibson, Posey, Vanderburgh, or Warrick received 44.4 percent of the degrees, while 14.3 percent of degree recipients were from other area counties. Graduates from all other counties in Indiana represented 23.1 percent of the graduating class; 17.1 percent of the degree recipients were from other states; 1.2 percent were from other countries.
- Of the baccalaureate degrees, 32.7 percent were awarded by the School of Liberal Arts, followed by the School of Business (26.9 percent), the Bower-Suhrheinrich School of Education and Human Services (19.2 percent), the School of Nursing and Health Professions (15.5 percent), the Pott School of Science and Engineering (5.0 percent), and Extended Services (.8 percent).

EXECUTIVE SUMMARY / FOLLOW-UP SURVEY

This report is a six-month follow-up of the 2003-2004 graduating class. Responses were received from 52 percent of the graduates.

EMPLOYMENT RATES

- 93.4 percent of the respondents are employed or actively seeking employment. The remaining 6.6 percent are either enrolled in additional academic coursework or have chosen not to seek employment at this time.
- 15.8 percent of the bachelor degree recipients are enrolled in graduate or professional school. This number plus the number employed or actively seeking employment will exceed 100 percent because many new graduates are employed while also pursuing graduate school coursework.

- Of the graduates who are employed, 71.6 percent have secured new positions and 28.4 percent are employed in the same positions they held prior to graduation.
- Among bachelor degree recipients who are employed, 88 percent are working "in their field", a slight increase from 87.8 percent in 2003. (Education majors employed as substitute teachers are coded as working "in their field".) Among ALL graduates employed, 89.7 percent are working in their field of study (2003 figure = 90 percent). Overall, these numbers have not changed significantly in the past two years.
- Among all bachelor degree recipients, the number of underemployed (i.e. working in a field unrelated to their career goals) stands at 10.5 percent. Among bachelor degree recipients who are employed, the total number of underemployed bachelor graduates stands at 12 percent.
- There were 27 (5 percent of the total respondents, 5.7 percent of the total seeking employment) bachelor graduates unemployed (not working and not pursuing additional coursework or attending graduate school, but seeking employment).

CONTINUED EDUCATION

- Among bachelor degree recipients who completed the questionnaire, 15.8 percent were attending graduate school within a year of graduation, down 3.2 percent from 2003 (19 percent).
- Among associate degree recipients, 50 percent are currently completing requirements for a baccalaureate degree, up from 37.9 percent in 2003.
- Among bachelor degree recipients, 3.1 percent are enrolled in additional undergraduate coursework, an increase of .6 percent from one year ago (2.5 percent).

GEOGRAPHICAL LOCATION

- Among all graduates, 72.5 percent accepted employment within a 60-mile radius of the University, a 1.5 percent decrease from 2003. (56 of these individuals reside in Kentucky or Illinois.)
- 29.3 percent of the employed bachelor degree recipients left the tri-state area, up slightly from the 26.2 percent who relocated in 2003.
- Employed 2004 master degree recipients also were more mobile in 2004; 26.3 percent relocated, compared to 23.9 percent in 2003.
- Among employed associate degree recipients, relocation stayed relatively consistent from 18.8 percent to 17.3 percent.

- Among all graduates, 14.3 percent left the tri-state to accept employment elsewhere in Indiana, bringing the total number of 2004 graduates who work and utilize services in Indiana to 86.8 percent. Even if the 56 Illinois and Kentucky residents are subtracted from the tri-state figure, the state retention rate for 2004 USI graduates is 77.8 percent.

SALARY STATISTICS

- The average starting salary for baccalaureate degree graduates securing **NEW, FULL-TIME POSITIONS** was \$30,120, a 1.6 percent increase over the average starting salary of \$29,657 in 2003.
- Associate degree salaries (**NEW, FULL-TIME POSITIONS**) increased more substantially, averaging \$35,030, a 10 percent increase over the \$31,833 reported in 2003. Because most associate degree recipients graduate from the School of Nursing and Health Professions (fields in high demand) it is not surprising that, on average, associate degree salaries are higher than those for recipients of four-year, non-technical degrees.

2004 SALARY STATISTICS BY ACADEMIC MAJOR

NEW FULL-TIME POSITIONS ONLY

ACADEMIC MAJOR	#	HIGH	LOW	MEAN	'03 MEAN
SCHOOL OF BUSINESS					
Master of Business Administration	3	80,000	45,000	56,967	54,350
PBCPA	4	56,500	32,500	41,750	34,500
Accounting	6	39,000	21,500	28,550	33,194
Accounting & Professional Services	18	42,000	20,000	34,033	41,000
Applied Computer Science	3	40,185	23,837	31,341	NA
Business Administration (Accounting)	1	17,680	17,680	17,680	34,000
Business Administration (Finance/Econ)	3	35,000	23,338	29,446	25,000
Business Administration (Management)	11	41,500	15,500	27,255	26,764
Business Administration (Marketing)	1	32,500	32,500	32,500	24,333
Business Education	1	37,000	37,000	37,000	24,500
Computer Information Systems	7	40,000	15,000	30,786	39,980
Economics	2	35,000	23,660	29,330	27,000
Finance	6	33,500	15,000	24,233	32,000
Management	6	40,000	24,000	30,763	24,950
Marketing	15	40,000	18,000	29,100	37,167
AS in Business	1	24,800	24,800	24,800	NA
AS in Computer Information Systems	1	17,000	17,000	17,000	12,000
BOWER-SUHRHEINRICH SCHOOL OF EDUCATION AND HUMAN SERVICES					
Master of Social Work	9	42,000	25,000	32,338	31,813
Elementary Education	31	40,000	15,000	28,144	27,193
Exercise Science	2	28,000	23,800	25,900	26,667
Physical Education	3	26,408	20,000	22,636	27,540
Social Work	5	25,000	18,137	22,327	21,500
AS in Early Childhood Education	1	17,160	17,160	17,160	16,300
SCHOOL OF LIBERAL ARTS					
Master of Arts in Liberal Studies	1	95,000	95,000	95,000	28,500
Art	6	38,000	18,720	24,787	23,183
Communication Studies	5	35,131	20,000	26,426	25,000
English	15	100,000	12,000	30,298	28,814
History	3	31,022	25,000	28,674	NA
Journalism/Computer Publishing	2	20,000	16,136	18,068	20,750
Philosophy	1	26,000	26,000	26,000	28,000
Political Science	4	35,000	17,680	28,170	26,667
Psychology	8	30,000	13,520	22,296	21,556
Public Relations/Advertising	24	40,000	16,640	26,709	26,960
Radio/TV	2	24,960	18,000	21,480	25,400
Social Science Teaching	5	36,600	27,000	31,720	33,000
Sociology	4	40,000	16,640	27,910	23,713
Speech, Communications, Theatre	1	27,500	27,500	27,500	NA
Visual Art	1	32,000	32,000	32,000	30,000
Visual Art K-12	1	27,350	27,350	27,350	NA
AS in Communications	1	28,000	28,000	28,000	NA

2004 SALARY STATISTICS BY ACADEMIC MAJOR

NEW FULL-TIME POSITIONS ONLY

ACADEMIC MAJOR	#	HIGH	LOW	MEAN	'03 MEAN
SCHOOL OF NURSING AND HEALTH PROFESSIONS					
Master of Health Administration	2	92,000	60,000	76,000	NA
MSN (Acute Care Nurse Practitioner)	1	55,000	55,000	55,000	68,000
MSN (Family Nurse Practitioner)	2	55,000	41,600	48,300	60,322
MSN (Nursing Education)	1	36,000	36,000	36,000	NA
MSN (Nursing Management & Leadership)	1	51,000	51,000	51,000	NA
Dental Hygiene Education	2	37,000	34,000	35,500	37,232
Health Services	13	40,000	23,000	32,130	27,420
Nursing	9	50,000	30,000	39,111	40,500
Occupational Therapy	13	52,000	25,000	46,064	44,222
Radiologic & Imaging Science	1	25,000	25,000	25,000	52,000
AS (Dental Hygiene)	4	62,400	45,000	56,490	46,600
ASN (Nursing)	10	60,000	30,000	37,242	31,824
AS (Occupational Therapy Assistant)	3	38,000	19,240	31,560	29,700
AS (Radiologic Technology)	6	40,000	30,000	34,400	36,242
AS (Respiratory Therapy)	5	31,158	15,000	26,912	38,563
Dental Assisting Certificate	1	26,000	26,000	26,000	13,800
POTT SCHOOL OF SCIENCE AND ENGINEERING					
Biology	4	34,000	20,000	26,500	25,000
Chemistry	2	30,000	30,000	30,000	18,000
Electrical Engineering Technology	2	60,000	46,500	53,250	NA
Geology	1	23,000	23,000	23,000	NA
Mathematics	3	44,000	30,000	37,147	29,000
Mechanical Engineering Technology	2	48,000	43,000	45,500	NA
Science Teaching	1	32,650	32,650	32,650	NA
EXTENDED SERVICES					
Applied Studies	1	32,500	32,500	32,000	NA

Employer**Position Title****Description****SCHOOL OF BUSINESS****MASTER DEGREES****Accounting (Surveys Returned: 2 of 6)**

Neel and Company LLP	Staff Accountant	
Guardian Automotive	Accounting Supervisor	Activity base cost, month end close, expense track and monthly/annual budgets

Business Administration (Surveys Returned: 18 of 34)

Ivy Tech State College	Program Chair	Manage full time faculty and students and degrees
University of Southern Indiana School of Nursing & Health Professions	Administrative Assistant	
Louisiana State University	PH.D Grad Assistant	Research and teach
St. Mary's Health System	Vice President, Corp. Quality	Oversight for quality initiatives the healthcare entities that are members and align with St. Mary's
Mac's Convenience Stores, LLC	A/R & Affiliate Accounting Manager	Collect on credit cards, NSF checks, franchise fees, and renters, manage staff of ten
Kight Home Center	Assistant CFO	Accounting, managerial & computer information management
University of Southern Indiana	Buyer, Procurement and Distribution Services	Purchase goods and services, obtain quotes, maintain and control fixed assets
Vectren	Rate Analyst	Help set rates customers pay
American General Finance	Business System Analyst	Project management
Kimberly Clark Corporation		Oversee operations of converting assets
City of Evansville	Finance Officer	Renew and prepare financial statements, approve purchases, assist with city budget
American General Finance	Accountant	General accounting duties, account balancing
Kinney, Kasha, & Buthod, LLP	Partner	Attorney, specialize in construction law
CH Robinson	Transportation Sales	Sales and customer service
Koch Air, LLC	Accounts Payable Accountant	
Deaconess Hospital	Financial Analyst	Accountant, financial analyst, general ledger and accounting
1 enrolled in graduate/professional school		
1 pursuing additional undergraduate coursework		
1 unemployed by choice		

POST-BACCALAUREATE CERTIFICATES

Certificate in Professional Accountancy (Surveys Returned: 4 of 8)

Larson, Allen, Weishair, & Co., LLP	Staff Accountant	Audit work
Brown Smith & Settle, LLC	Staff Accountant	Entry-level accounting position in tax department
Braden and Associates, CPAs	Accountant/Auditor	Perform audits, help with taxes during season, etc.
Jeffersonville Nursing Rehab	Administrator	
1 enrolled in graduate/professional school		

Certificate in Computer Information Systems (Surveys Returned: 1 of 3)

Whirlpool	EPT Coordinator	
-----------	-----------------	--

BACHELOR DEGREES

Accounting (Surveys Returned: 8 of 14)

Midland Powder Company	Accounting Clerk	Oversee billing, inventory, reports, ordering supplies and forms, the hiring of employees, etc.
BKD, LLP	Staff Accountant	Participate in various audit and tax services
Vectren	Senior Business Analyst	Perform analysis of units for requirements, document processes, create/implement plans
McElroy, Mitchell & Associates, LLP	Staff Accountant	Taxes, auditing and miscellaneous
Harding Shymanski & Company	Entry Level Accountant	
Breck Logistics	Air Transportation Broker	Broker freight
Shoe Carnival	Inventory Control Specialist	Audit the stores physical inventories and analyze the results
Old National Bank	Customer Services Representative	Complete account open transactions, originate and process consumer loans, assist in correcting accounting problems
2 enrolled in graduate/professional school		
1 pursuing additional undergraduate coursework		

Accounting & Professional Services (Surveys Returned: 25 of 38)

Uniseal	Cost Accountant	Assign costs to products, analyze stats on production costs
Edward Jones	Broker Assistant	Administrative tasks
Barber & Shoulders, LLP	Legal Assistant	
Ernst & Young	Staff Accountant	Auditing position
BKD, LLP	Staff Accountant	Audit department, traveling to clients location
Blue & Company	Staff Accountant	Work in the audit department
BKD, LLP	Staff Accountant	

State Board of Accounts	Field Advisor III	Auditor
Defense Finance & Accounting Services	Accountant	Payroll, special financing projects, bookkeeping, etc.
CitiFinancial	Customer Service Representative	Loan office dealing in personal and real estate loans
CMC	Staff Accountant	Perform month-end closing procedures, journal entries, financial statement analysis
Suplee & Shea, P.A.	Staff Accountant	Primarily preparation of taxes, also do various accounting related services for clients
McElroy, Mitchell & Associates, LLP	Staff Accountant	
Harding Shymanski & Company	Staff Accountant	Various accounting services: audit, individual/corporate tax, loan reviews, etc.
A & A Metal Products, Inc.	Accountant	
BKD, LLP	Staff Accountant	Work in tax department
Welborn Clinic	Business Office Representative	Handle patient accounts and review accounts
Buehler's Buy Low	Back Up Bookkeeper	
Hurst Manufacturing	Staff Accountant	Account management
D-Patrick Inc.	Rental Agent	Rent out and check in rental cars to customers
University of Southern Indiana	Graduate Assistant	
Western Southern Financial Group	Sales Representative	Sell life, health and disability insurance
YWCA	Bookkeeper	Financial statement preparation, payroll, accounts payable and receivable, claims management
Harding Shymanski & Company	Staff Accountant	General tax services and audits
Blue & Company	Staff Accountant	
4 enrolled in graduate/professional school		
1 pursuing additional undergraduate coursework		

Applied Computer Science (Surveys Returned: 3 of 5)

Deaconess Hospital	Desktop Specialist I	Technical support for the hospital
Deaconess Hospital	Systems Engineer I	Responsible for IT Network & firewall upkeep
Innovative Data Technologies	Computer Systems Specialist	Network & computer technician related tasks

Business Administration (Surveys Returned: 60 of 97)

Business Administration/Accounting (Surveys Returned: 3)

Richard Campbell CPA & Co., PC.	Staff Accountant	Payroll, financial statements, tax returns, & check writing
CBC Truss Shop/B & A Metal	Customer Service Representative	Answer phone, enter sales orders, customer interaction

Business Administration/Computer Information Systems (Surveys Returned: 1)

Equinox		Public relations
---------	--	------------------

Business Administration/Economics/Finance (Surveys Returned: 4)

Integra Bank	Clerk	Balance accounts, process returns, make corrections for tellers and customers
GE Insurance Solutions	Underwriter	Analyze risk, underwrite malpractice insurance for medical professionals
Fastenal	Assistant Manager	Oversee other employees
Old National Bank	Credit Input Specialist	Work in commercial credit department, enter financial information spreadsheets, produce reports, and pull credit bureaus

Business Administration/International Business (Surveys Returned: 1)

Xa Milne	Au Pair	Look after children after school and travel around UK and Europe
----------	---------	--

Business Administration/Management (Surveys Returned: 25)

Red Spot Paint & Varnish Co., Inc.	Human Resources Coordinator	Responsible for union/non-union attendance, grievance procedures, benefits, employee relations, meetings, etc.
Manifold Refuse	Office Assistant	Office work, running errands, working on the trucks
CMC	Inbound Customer Service Representative	Take customer service calls for various credit cards
Vectren Corporation	Corporate Accounting Analyst	Debt, bank reconciliations, account analysis, intercompany settlements, balance sheet reconciliations, month end duties
Nyhart, INC	Client Specialist	Service clients & members with healthcare benefits
ITA	CEO	Run a computer consulting company
Heartland Home Finance	Loan Officer	Refinancing loans, consolidate bills
CVS Pharmacy	Assistant Manager	
Walgreens	Assistant Manager	
Larry Farmer Appraisal Co.	Real Estate Appraiser Trainee	Develop a value for real estate using state required valuation techniques
Integra Bank	Balance and Central Clerk	Balance teller cash, reconcile IRA and CD accounts
Evansville Otters	Operations Assistant	
Applebee's	Neighborhood Expert	
JC Penney	Sales Associate	Assist customers, stock & clean department, cashier
Koch Originals Inc.	Human Resource Assistant	Attendance, vacation, personal time, hiring, benefits and 401 K paperwork
N/A	Recruiter	Recruit for pharmaceutical company
Cintas	Management Trainee	Various tasks in aspect of the company training for a future management position
Nova Polymers, Inc.	Manager of Research & Development/Quality	Research & development and quality for plastics firm
Waupaca Foundry, Inc.	Laborer	

American General Finance Services	Collections Support Specialist	Provide customer service for branches regarding collectable accounts
Jeff Angel	Supervisor	Oversee and participate in construction activities
Information Technology Architects, Inc.	Technical Specialist Consultant	Provide specialize skills to organizations that currently do not have those skills in house
Integra Bank	Proof Operator	Data entry
Union Planters Bank, NA	Commercial Lending Assistant	Book and maintenance commercial loans
1 enrolled in graduate/professional school		
1 unemployed		
2 pursuing additional undergraduate coursework		

Business Administration/Marketing (Surveys Returned: 9)

Kitchen Solutions	Treasurer, Manager	Keep books, handle administrative tasks, advertise, design kitchens by computer, install kitchens by hand and showroom display
Old National Bank	Teller	
Heston Insurance Agency	Commercial Account Manager	Sales and services for commercial insurance accounts
Deaconess Hospital	Customer Service Representative	Main operator, assign patients to beds, monitor code systems
Emporium Hair Salon	Receptionist	Answer incoming calls
Old National Bank	Teller	
Self Employed	Makeup Artist	Apply makeup and special effects to TV/film industry
1 enrolled in graduate/professional school		
1 unemployed		

Business Education (Surveys Returned: 1)

Lowell High School	Teacher	Teach business and coach football & wrestling
1 pursuing additional undergraduate coursework		

Computer Information Systems (Surveys Returned: 15)

Office Depot	Customer Service Officer	Customer service in retail
Business Micrographics	Digital Imaging Clerk	Scan medical records
Business Micrographics	Digital Imaging Clerk	Scan patient files into an electronic database
Diversco	Industrial Worker	Temporary work in industry
Tenex, Inc.		Database development and maintenance, system upkeep
Computer Merchant	Help Desk Analyst	
Envision Home Care	Operations Manager	Make day to day decisions, billing, payroll, computer help desk
Atlas Van Lines	Programmer	

American General Financial Service-Mortgage Service Center	Systems Administrator	Oversee systems security & maintenance. Write reports
Atlas Van Lines	Programmer	Write computer programs
Dana Corporation	Cost Accountant	Analysis of sales and cost of sales figures through spreadsheet and database manipulation
2 enrolled in graduate/professional school		
1 unemployed		
1 unemployed by choice		

Economics (Surveys Returned: 4 of 8)

Beneficial	Accelerated Management Trainee	Account executive working with customers to consolidate debts
Build-A-Bear Workshop	Bear Trainer	
Northern Illinois University	Graduate Assistant	Assist teaching in economics department
Southwestern Indiana Regional Development Commission	Project Specialist	Interact with local elected officials, governmental entities and nonprofit organizations to find sources of funding through grants. Coordinate and schedule SWIRDC events
3 enrolled in graduate/professional school		

Finance (Surveys Returned: 12 of 26)

First Federal Savings Bank	Manager Trainee	Travel around different areas of the bank and learn
Dewitt Mortgage	Loan Officer	
Buehler Buy Low	Manager	Supervise staff and other management duties
1st Bank	Teller	
Indiana State Board of Accounts	Field Examiner	Audit governmental entities in counties
Lazarus	Sales	
Construction Co.	Frame Builder	
Deaconess Hospital	Executive Secretary	Assistant director of home services
United Community Bank of West Kentucky	Loan Support Staff	Assist loan staff with day to day activities associated with lending, taking appointments, pulling credit, etc.
Peoples State Bank	Loan Representative	Paper work for our loan offices and notes closing
First Federal Savings Bank	Manager In Training	Train for manager (about 18 months before becoming manager)
Western Southern Financial	Sale Agent	Meet with clients through cold leads and natural market in soliciting the company's products
3 enrolled in graduate/professional school		

Management (Surveys Returned: 15 of 26)

Tri County Equipment	Parts	Oversee ordering & returning parts, supervise
SafeCo Insurance/Old National Bank	Data Entry/Check Processor	

Old National Bank	Employment Specialist	Hire people for particular positions
Old National Bank	Input Operator	Enter account and check information into computer and verify
NSWC Crane	Logistics Management Specialist	Support EP-3E aircraft, oversee/track various parts and repairs to support fleet, travel often
University of Southern Indiana Housing	Administrative Assistant	Work main desk/phone; manage mailroom; create most training manuals
Automotive Color and Supply	Management	Manage store
Galyans Sport: Outdoor	Human Resources Specialist	Various functions in human resources, hire, train and associate relations
Toyota Motor Manufacturing Indiana	Staffing Specialist	Hire salaried individuals
Evansville Teachers Federal Credit Union	E-Commerce Project Coordinator	Research & implement new services for E-commerce department
Red Spot Paint	Human Resource Coordinator	Assistant to corporate human resource director with benefits, attendance, wellness programs
Edward Jones Investments	Financial Investment	Help clients meet financial goals through recommendations of investments
Sherwin-Williams	Assistant Manager	
2 enrolled in graduate/professional school		
1 unemployed by choice		

Marketing (Surveys Returned: 24 of 47)

Wells Fargo Financial	Credit Manager	
		Product development, promotions, contests, trademarks, advertising specialties, consumer correspondence and marketing related
Lewis Bakeries, INC.	Marketing Assistant	
Wolf Run Golf Club	Assistant Golf Pro	Help manage and operate an upscale private golf club
Enterprise Rent-a-Car	Management Trainee	Utilize sales, market and customer service to obtain and keep customers
Pitney Bowes	Sale Executive	
American Crew, Inc.	Marketing Specialist	Work in marketing department for various position
Finish Line	Store Manager	Run daily store operations, control sales, work for constant improvements
Evansville Teachers Federal Credit Union	Marketing Administrator	
Millennium Steel Service	Sales Coordinator	Learn the daily activities of the two account representatives, determine and maintain inventory levels of steel to be shipped and maintain customer services
Enterprise Rent-a-Car	Manager Trainee	Interact with dealerships, body shops, insurance agents, & customers. Rent cars, make sales
X-treme Limousine Service, LLC	President	Purchased a 2005 Hummer H2 limousine and rent it out to clients in the tri-state area

Integra Bank	Customer Services Representative	
Fastenal Company	Outside Sales	
Xerox Corporation	Product Specialist/Sales Agent	
Victoria Secret Beauty	Co-Manager	Hire, manage, money handling, inventory sales quotas
Stens Corporation	Product Technician	Product analysis, introduce new parts to markets, answer calls, quality control with parts
May Department Stores Company	Data Administrator	Prepare products to appear online, research, update, categorize, and compliment items
Garfield's Restaurant and Pub	Assistant Manager	Oversee operations, schedule, hire employees
Bank of America	Teller	Bank teller
S & D Coffee	Route Sales	Take orders, sell additional products, take inventory, deliver products to customers
Long Horn Steak House/Bath and Body Works	Hostess/Retail Salesperson	
Commonwealth Broadcasting	Account Executive	Sales & account management for radio stations
2 unemployed		

ASSOCIATE DEGREES

Business (Surveys Returned: 6 of 10)

Lawn Kare	Secretary/Bookkeeper	Responsible for accounts, taxes, payroll, filing, and other office duties
American General	Administrative Assistant/Senior Service Specialist	Float secretary work where ever needed
Dartt Automotive Service, Inc.	Service Writer	Invoice, write job tickets, receive payments, delivery, schedule, minor accountant jobs
Oswald Communications	Writer/Producer	Write/produce commercials
American General Finance	Sr. Communication Analyst	Administration of the AFG telephone system, call flow design, troubleshoot and support of all voice and equipment
3 pursuing additional undergraduate coursework		

Computer Information Systems (Surveys Returned: 2 of 3)

Simplex Grinnell	Senior Technical Representative	Installation programming services
Welborn Clinic	Medical Imaging	Schedule procedures being done in the Radiology Department
1 pursuing additional undergraduate coursework		

Employer**Position Title****Description****BOWER-SUHRHEINRICH SCHOOL OF EDUCATION AND HUMAN SERVICES****MASTER DEGREES****Elementary Education (Surveys Returned: 7 of 17)**

Evansville Vanderburgh School Corporation	Reading Coach	Provide leadership & professional development to K-3 teachers
MSD of North Posey	Teacher	Teach fifth grade
Good Shepherd	Teacher	Teach math to sixth - eighth grade
MSD of North Posey	Teacher	Teach seventh grade life science
Evansville Vanderburgh School Corporation	Teacher	Teach fifth grade
Henderson County Schools	Teacher	Teach fourth grade, AB Chandler Elementary
Evansville Vanderburgh School Corporation	Special Elementary Education	Teach students with mild disabilities K-5

Secondary Education (Surveys Returned: 6 of 14)

Mater Dei High School	Teacher	Teach geometry & algebra 2 at high school
Warrick County School Corporation	Teacher	Teach high school pre-algebra and algebra 2
Earle C. Clements Job Corps Academy	Teacher	Teach English to foreign students
Southeast Dubois School Corporation	Teacher/Coach	Teach secondary physical education, health/coach junior varsity basketball
Evansville Vanderburgh School Corporation	Teacher	
Henderson County Schools	Teacher	Teach eighth grade science, North Middle School

Social Work (Surveys Returned: 21 of 48)

Southwestern Indiana Mental Health Center	Outpatient Therapist	
Families Thru International Adoption	China Coordinator	Help families from the U.S. adopt from China
Youth First Inc./River Valley Behavioral Health	School Social Worker/TCSP	School social worker through Youth First, Inc./Work with children & adolescents with mental health disorders
St. Mary's Medical Center	Social Worker	Pediatric/generalist social work at the hospital
Lampion Center	Counseling	
River Valley Behavioral Health	Program Manager	Clinical and administrative director of a therapeutic foster care program
Ireland & Luzio Behavioral Services, Inc	Therapist	In-home therapy
Lighthouse Counseling Services, Inc.	Case Manager	Therapist
Evansville Psychiatric Children's Center	Psychiatric Attendant	Provide daily care for clients

Division of Family & Children	Case Manager	Assist clients maintain a stable living environment, work with other agencies to provide services
Egyptian Health Department	Mental Health	Mental health assessments
Lakeside Behavioral Health System	Therapist	Give therapy to adolescents with mental health and substance abuse issues
Echo Inc.	Case Coordinator	Homeless outreach worker, provide case management and outreach services to the homeless population
Evansville Association for the Blind	Vocational Specialist	Conduct work evaluations in sheltered workshop; link to supportive services; provide counseling
Southern Hills Counseling Center	Staff Therapist	Social work
FWHS	Clinician II	Provide therapy for children and adolescents
Echo Community Health Care, Inc.	Social Service Coordinator	Supervisor of Social Work Dept.
1 enrolled in graduate/professional school		
3 unemployed		

BACHELOR DEGREES

Elementary Education (Surveys Returned: 65 of 145)

GPW Special Education Co-Op	Program Assistant	Assist in emotionally handicapped room
Greater Clark County School Corporation	Teacher	Teach kindergarten
Springs Valley Elementary School	Teacher	Teach fourth grade and coach football
Owensboro Independent School Corporation	Teacher	Teach special education to eight behaviorally disturbed children
Evansville Vanderburgh School Corporation	Teacher	Title I support in language arts for grades 6-8 at McGary Middle School
Red Hill High School	Study Hall Aide	
Barr-Reeve Community Schools	Teacher	
MSD of North Posey	Teacher	Teach fourth grade, elementary school
Evansville Vanderburgh School Corporation	Teacher	Teach English to children new to the language
Evansville Vanderburgh School Corporation	Teacher	Teach first grade
Evansville Vanderburgh School Corporation	Teacher	Teach eighth grade math and after school tutor
Eldorado Community Unit #4 School District	Teacher	Teach sixth grade math
Fox Trail Elementary	Teacher	Teach fourth grade general education
North Central Middle School	Teacher	Teach eighth grade earth science
South Harrison Community School Corporation	Teacher	Teach kindergarten and coaching junior varsity volleyball

Evansville Lutheran	Substitute Teacher	Substitute teach first - eighth grade
Vincennes Community School Corporation	Teacher	Teach afternoon kindergarten and extended day kindergarten
Tippecanoe School Corporation	Teacher	Teach first grade
East Gibson School Corporation	Teacher	Teach eighth grade general math
Toyota Children's Center	Teacher	
Brookville Elementary School	Teacher	Teach first grade
MSD of Mt. Vernon	Teacher	Teach sixth grade language arts and coach seventh grade boys basketball
Metropolitan Nashville Public School	Teacher	Small school (200 students), balanced literacy program. Diverse class of twelve students
Bluegrass Middle School	Teacher	Teach sixth grade science
Bartholomew County School System	Teacher	Teach special education and biology at high school
St. Wendel Catholic School	Teacher	Teach math for grades sixth - eighth, teach language arts for sixth grade
Union County Schools	Teacher	Teach full-day kindergarten
Webster County School Corporation	Teacher	Teach junior high social studies
Lafayette School Corporation	Teacher	Teach seventh grade math
St. Ann Interparochial School	Teacher	Teach fourth grade math and reading
Evansville Vanderburgh School Corporation	Teacher	Teach special education to middle school in math and science
Evansville Vanderburgh School Corporation	Teacher	Teach special education
Blake Academy	Teacher	Teach kindergarten through first grade
Lutheran Central Elementary School	Teacher	Teach first grade
Mooresville Consolidated	Teacher	Teach first through sixth grade music
Child and Family Connections,WOVSED	Services Coordinator	Work with special education children, preparing them for school, provide services such as PT, OT, speech, etc.
JC Penney's	Sales Associate	
Kono Enterprises	Manager	
St. Phillips Catholic School	Teacher	Teach first grade temporarily
Straub Photography	Customer Service	
Evansville Vanderburgh School Corporation	Teacher	Teach special education
Deaconess Credit Union	Teller	Give members money out of accounts and paperwork
Centenary Child Care Ministries	Teacher	Teach full day kindergarten
Old National Bank	Teller	Cash checks, balance accounts, receive money, customer service, referrals
	Substitute Teacher	
Evansville Vanderburgh School Corporation	Teacher	Substitute teach

St. Anthony Elementary	Teacher	
Saturn	Sales	
Arch Diocese of Indianapolis	Teacher	Teach second grade
Evansville Vanderburgh School Corporation	Teacher	Substitute teach
Evansville Vanderburgh School Corporation	Site Coordinator	Coordinate sites after school
	Teacher	Substitute teach
Evansville Vanderburgh School Corporation	Remediation Teacher	Teach middle school remediation
MT. Erie Grade School	Reading Specialist	Assist one on one tutoring K-1
Blue River Services	Teacher	Teach pre-school and provide day care
Orleans Elementary School	Teacher	Teach computer lab to students in grades K-6
North Spencer Schools	N/A	
MSD of Mt. Vernon	Teaching Assistant	Assist teacher with K-5 students
Evansville Vanderburgh School Corporation & Warrick County School Corporation	Teacher	Substitute teach
7 enrolled in graduate/professional school		
4 unemployed		
3 pursuing additional undergraduate coursework		
2 unemployed by choice		

Exercise Science (Surveys Returned: 7 of 14)

Health Fitness Corp.	Substitute	
International School of Curitiba	Teacher	Teach PE
Drifting Dunes Girls Scout Council	Program/Membership Specialist	Develop programs for the council and recruit volunteers and girls in certain rural areas
Summex Health Management	Health Educator	Help at-risk clients lead a healthier lifestyle and lower health insurance premiums
Aaron Wand	Personal Trainer	Work at Bally Total Fitness training
Deaconess Hospital	Healthcare Advocate 1, Fitness Coach	Charge of employee wellness for Deaconess Hospital
A and B Pool	Sales Manager	
1 enrolled in graduate/professional school		

Physical Education (Surveys Returned: 7 of 13)

Bob's Gym	Personal Trainer	Exercise with patrons, working one on one
St. Peter's Lutheran School	Teacher	Teach physical education to pre-kindergarten through eighth grade

University of Southern Indiana	Area Coordinator	Oversee residents in the McDonald west housing area on campus, supervise staff of resident assistants, programming and judicial matters
Union County Kentucky	Physical Education Teacher	Teach high school physical education
Walgreen's/St. Vincent	Substitute Teacher	
Dunham Sporting Goods	Department Coordinator	Manager duties of exercise department in sporting
1 unemployed		

Physical Education (non-teaching) (Surveys Returned: 1 of 1)

1 enrolled in graduate/professional school		
--	--	--

Social Work (Surveys Returned: 19 of 36)

Vanderburgh County Probation Department	Pre-Sentence Investigator	Compile pre-sentence reports for circuit and superior court judges
Deaconess Cross Pointe	Social Worker/Discharge Planner	Organize appointments and placement, develop treatment plans, facilitate groups, interview clients and families
Bridges of Indiana	Support Living Assistant	Caregiver for people w/disabilities ages 8 and 10
Southwest Regional Youth Village	Counselor	Work with at risk youth
Crisis Connection, Inc.	Victim Advocate	Work with clients to make goals and see their options for violence-free living
Office of Family & Children	Intern	Child abuse hotline, guardianship/adoption studies
Southwestern Indiana Mental Health Center	Mental Health Technician	Work in group home with mentally ill
Evansville Vanderburgh School Corporation	Site Coordinator	Coordinate after-school and summer programs for grade K-5
Law Office of David M. Williams	Receptionist	Answer phone, meet clients, handle files
Southern Indiana Resources Solutions	Community Resources Specialist	Provide community hab, residential hab and employment services to people with developmental disabilities
Egyptian Health Department	SASS Counselor	Work with children ages 4-17 as a youth counselor
Kapp Golf Management	Administrative Assistant	
Great Harvest Bread Co.	Sales Clerk	Production and sales
Child and Family Connections,WOVSED	Service Coordinator	Work with children 0-3 years old, developmental speech, hearing, vision problem and their parents
1 unemployed		
9 enrolled in graduate/professional school		
1 unemployed by choice		

ASSOCIATE DEGREE

Early Childhood Education (Surveys Returned: 8 of 15)

Bright Horizons-Toyota Children's Center	Teacher	Teach Pre-K
Home Depot	Associate	Deal with contractor
Parents Choice Childcare	Director	Run daycare; hire and manage other employees
Cape Head Start	Site Supervise Lead Teacher	Teach Pre-K
Crossroads Christian Childcare	Infant Care Giver	Take care of infants' needs
Head Start	Teacher	3 - 5 year old teacher
Kimball Kids	Infant-care giver	Care for infants of Kimball employers
Methodist Temple Children's Center	Teacher	Teach Pre-K, four, and five year olds
2 pursuing additional undergraduate coursework		

Employer**Position Title****Description****SCHOOL OF LIBERAL ARTS****MASTER DEGREES****Liberal Studies (Surveys Returned: 2 of 3)**

Pepperdine University	University Records	Manage all the university records and teach a section of Rhetoric and Composition while pursuing PhD
University of Southern Indiana	Area Coordinator	
I enrolled in graduate/professional school		

BACHELOR DEGREES**Art (Surveys Returned: 13 of 29)**

Lampion Agency	Case Manager	Work with families and children in using government resources
Health Club	Greeter	Work in health club and greet customers
UPS	Human Resources Specialist	Hire, train and recruit
Kwik Kopy Printing & Mailing	Graphic Designer	Design & prepare files for printing
Tri-State Dental	Dental Assistant	Assist at chair, X-rays
Lazarus-Macy's	Women's Fragrance Sales Associate	Commissioned sales
AD-Craft	Graphic Designer	Design signs and new company logos
Sam's Club	Office Work	General office work
The Inkwell Parcel Plus	Graphic Designer, Counter Sales Representative	Design stationary, magazines, newsletters; customer packing and shipping
Landmark Communications	Graphic Artist	Ad designer
Max & Erma's	Waitress/Bartender	Wait tables and tend bar
Abby Press	Graphic Design	Work with and setup pictures for magazine
I unemployed		

Communications Studies (Surveys Returned: 7 of 12)

Fifth Third Bank	Customer Services Representative	
David's Bridal	Sales Associate	
Midwestern Pet Foods, Inc.	Assistant International Trade	Make commercial invoices, packing lists & health certificates
Conair	Flight Attendant	Provide safety information, aide people
Kankakee Community College	Sports Information Director	Relay sports information to media, update website, maintain fitness center, assistant coach for volleyball/basketball
Personnel Management Inc. at Toyota Motor Manufacturing	Body Weld Conveyance	Sort, repack, and deliver parts to process
Atlas Van Lines	Corporate Trainer	Create and conduct training for employees

English (Surveys Returned: 24 of 36)

Methodist Hospital	Nurse Assistant	Provide care for patients who need fed and bathed, also take vitals, etc.
Mt. Carmel High School	Teacher	Teach high school English

Gerling Law Offices	Legal Assistant	Assist two attorney's and paralegals
Evansville Vanderburgh School Corporation	Teacher	Teach English, Bosse High School
American General	Quality Assurance Specialist	
Evansville Vanderburgh School Corporation	Teacher	Teach high school English
Darden Restaurant/Smokey Bones Restaurant	Bartender/Trainer	
Evansville Vanderburgh School Corporation	Teacher	Teach English, Central High School
Wal-Mart	Salaried Assistant Manager	Oversee front end, soft lines, department managers
First Federal Saving/Premier Video	Teller/Supervisor	
A College	Testing	
University of Southern Indiana	Administrative Assistant	
Health Care Services Group Inc.	Account Manager	
The Goddard School	Assistant Teacher	Assist teacher in one-year-old room
CMC	Inbound Customer Service Representative	Receive inbound customer and client calls concerning credit card information, payments, etc. on accounts
Pike County School Corporation	Teacher	Teach English to 10th and 11th grade
Atlas Van Lines	Log Coordinator	Open mail, check drivers' logs for mistakes, film
McVay	Vice President	Run daily construction and building contracts, handle real-estate investment
Union Federal Savings & Loan	Teller	Cash checks and other teller responsibilities
Rend Lake College	English Instructor	Teach English
Fairfield Community High School	Teacher	Teach senior English and drama
Evansville Vanderburgh School Corporation	Teacher	Substitute teach
2 enrolled in graduate/professional school		
1 pursuing additional undergraduate coursework		

French (Surveys Returned: 1 of 2)

ITT Educational Services	Accounts Payable	
--------------------------	------------------	--

German (Surveys Returned: 1 of 1)

University of Southern Indiana	Teacher	Teach in children's center for two year olds
--------------------------------	---------	--

History (Surveys Returned: 11 of 23)

Dress Barn	Assistant Manager	Supervise, create schedules, merchandising, organize office, clerical tasks
------------	-------------------	---

Cincinnati Fire Department	Firefighter Recruiter	Work for training bureau and make fire/EMS responses for fire company
Indiana University	Circulation Clerk	
Imagistics International, Inc.	Sales Representative	Sell office equipment, i.e. copiers, fax machines
Jasper Seating Company	Dowel Driver	Run dowel machine
4 enrolled in graduate/professional school		
3 unemployed		
1 pursuing additional undergraduate coursework		

Interpersonal - Organizational Communications (Surveys Returned 1 of 3)

1 not employed by choice		
--------------------------	--	--

Journalism & Computer Publishing (Surveys Returned: 4 of 12)

The Journal Review	Copy Editor	Edit copy/articles for newspaper and design specific pages during the week
Work Abroad Program	Temporary Worker	On a short-term work permit
Cleveland Institution of Art	Assistant Shipper	Catalog materials
Aspect College	Social Organizer	Organize weekly & monthly social programs, give tours, work front desk
1 enrolled in graduate/professional school		

Philosophy (Surveys Returned: 1 of 3)

Matthew 25	Prevention Case Manager	Work with people at high risk for HIV on behavioral changes
1 enrolled in graduate/professional school		

Political Science (Surveys Returned: 11 of 20)

Fleshman Hylliard	Human Resources Intern	
McDonald's	Manager	Manage daily operations of fast food restaurant
FedEx/Kinko's	Center Manager	Manage FedEx/Kinko's
Sherwin Williams	Management Trainee	Travel from store to store
Deaconess Hospital	Film Librarian	Answer phones, organize files, customer relations
TJ Maxx	Assistant Supervisor	Supervise
John Hostettler	Field Representative	Represent congressman at events and meetings
Chris' Marathon	Manager/Owner	
Holiday World	Ride Operator	
3 enrolled in graduate/professional school		

Psychology (Surveys Returned 22 of 48)

Buffalo Wild Wings	Waitress	Serve customers
YMCA	Community Outreach Supervisor	Supervise children's behavior and monitor language and customer services
Evansville Psychiatric	Psychiatric Attendant	
Evansville ARC	Community Liaison	Community connections for citizens with mental retardation
Sweet Pea Day Care	Teacher	Teach 2-3 year olds age appropriate curriculum
US Postal Service	Address Management	Database management
Adult and Child Behavioral Health Care	Case Manager	
ARC Industries	Placement Coordinator	Match mentally retarded citizens with community jobs
The Rehabilitation Center	Group Home Coordinator	Behavior specialist for MR/DD children and adults
Evansville Airport (Delta)	Ticketing Agent	Give passengers tickets, assist with passenger loading and unloading
Old National Bank	Teller	
Evansville Treatment Center	Counselor	Counsel drug addicts
METS	Operations Intern	
Kirlin's Hallmark	Sales Associate	
University of Southern Illinois	Graduate Assistant	Provide computer assistance to psychology faculty
Ireland & Luzio Behavioral Services	Youth Counselor	Social work, transport children, parent aide, counselor
CRS First Choice	Disabled Assistant	Work with disabled people
Lic's Ice Cream Parlor/Roberts Stadium	Production Assistant/Bartender	
Deaconess Cross Pointe	Mental Health Counselor	Lead groups, assist patients, chart, counsel, etc.
7 enrolled in graduate/professional school		
1 unemployed by choice		

Public Relations and Advertising (Surveys Returned: 40 of 88)

Tours of Enchantment	Executive Secretary	Assist president of Co. with details of travel/event organization
JWT Specialized Communications	Account Coordinator	Place recruitment advertisements across the country
US Army	Public Information Officer, Corps Artillery	Consultant to the Corps on media relations, advisor to US media while on foreign missions
Weber Shandwick Worldwide	Assistant Account Executive	
Cheeseburger In Paradise	Front House Manager	Manage employees, ensure restaurant displays correct image, dealing with profit and loss, ensure food quality, etc.
Mt. Vernon Ford-Mercury	Public Relations Director	Conduct interviews, customer calls, make ads, PR in the community

Atlas Van Lines	Data Assurance Coordinator	Data entry of claims
Wild Wood Village Apartments	Assistant Manager	Leasing/renting apartments, rent audit, property tours, advertising/marketing apartments
Easter Seals	Events Coordinator	Plan fundraising events
Blue Ridge Zoological Society	Events/Education Coordinator	Coordinate special events, group tours, birthday parties, & after-hours rentals
Humana, INC	Customer Services Representative	Answer phone, help people with enrollment of health insurance plans
Signs By Tomorrow		
Evansville Teacher's Federal Credit Union	E-Commerce Assistant	Work with internet banking, Visa cards, debit cards, organize social events for employees
Conseco	Agency Analyst	Prepare paperwork for insurance agencies
South Central Communications	Account Manager	Sales person, sell airtime on Hot 96
Coach	Sales Associate	Working at a high end retail store
Evansville Otters	Director of Ticket Sales	Sell tickets, oversee ticket operations (order and distribution)
Reese Kitchens	Receptionist	Various projects as well as answer phones
Kitch & Schreiber	Administrative Assistant	Administrative work with accounts trade show display representative
Daniel, Burton, Dean		
Community Blood Centers of South Florida	Blood Center Recruiter	Similar to sales and marketing, work with public, companies, business to hold blood drives
Preferred Environmental Standards	Marketing	Research target markets, distribute marketing materials, schedule meetings
Sermersheim's Corvette, Inc.	Office Manager	Work with customers in charge of accounts payable and design catalog
Rogers Jewelers	Assistant Buyer	Buy product for stores, maintain company website, special projects
Helfrich Hills Golf Course	Maintenance	Course work, cut grass, landscape, etc.
Bayer's Plumbing, Inc.	Marketing & Advertising Director	Prepare weekly payroll, pick advertisement placement and design
O'Charley's	Server	Serve guests
Barnes and Noble	Bookseller	
Mt. Vernon Democrat	Advertising/Manager	Sell advertising
GFI	Human Resources Coordinator	Recruit and administer human resources functions
Sprint PCS	Communication	Consult wireless customers on service
Enterprise Rent-A-Car	Assistant Manager	
Keller Crescent	Media Coordinator	Work for and coordinate various media activities
Cingular Wireless	Business Sales Specialist	Assist in sales process and assist sales representatives
Sonitrol of Evansville	Business Develop Manager	Sale security, work with cancelled customers, market system
South Central Communications	Office Assistant	

American Cancer Society	Communications Specialist	Oversee all communications activities for southern Indiana
3 enrolled in graduate/professional		
3 unemployed		

Radio & Television (Surveys Returned: 7 of 18)

NEWS 25/TGI Friday's	Production Assistant/Bartender	Create graphics for morning show/Serve drinks to customers
Turoni's Pizza	Server	Wait tables
AM General Corporation	Finance Clerk	Work with accounting
Expressway Dodge	Advertisement Manager Assistant	Assist advertisement manager with advertisement
14 WFIE	Production Assistant	Pre-production of news elements, master controls operator, direct weekend weather cut-ins, operate studio cameras during live newscasts
1 enrolled in graduate/professional school		
1 unemployed by choice		

Social Science Teaching (Surveys Returned: 6 of 10)

Barr-Reeve High School	Teacher	Teach high school social studies
Corydon Central Jr/High School South Harrison Community School Corporation	Teacher	Teach seventh - eighth grade social studies.
Holy Redeemer	Teacher	Teach junior high school social studies
Okeechobee City Schools	Teacher	Teach reading
Seneca Valley School Corporation	Teacher	Substitute teach secondary levels
West Noble High School	Teacher	Teach social studies
1 pursuing additional undergraduate coursework		

Sociology (Surveys Returned: 15 of 28)

United Methodist Youth Home	Program Director Assistant	Take girls to court hearings; create progress reports; recreation for girls
Scates Valley Inc.	Irrigation Sales	Sell irrigation systems
Vale Ski Slope	Driver	Drive a snow cap for ski slope
Penn Station	Crew Member	Make sandwiches
Sears Roebuck & Company CMC	Operations Manager	Responsible for HR, maintenance, cashiering, customer service, etc.
Madison Correctional Facility	Substance Abuse Counselor	Counsel women in prison for substance abuse
Evansville Vanderburgh County	Pre-Sentence Investigator	Investigate cases before sentencing

Kinko-FedEx	Clerk	Customer service, copy items, prepare packages, paperwork
Family Video	Manager Trainee	Manage video store
Vanderburgh County Sheriff's Department	Detention Officer	Detention officer at the local jail
RSC	Coordinator	Test advertisement with general public
2 unemployed		
1 pursuing additional undergraduate coursework		
1 unemployed by choice		

Spanish (Surveys Returned: 4 of 8)

AIG	Computer Support	Take care of computer systems within Puerto Rico
Evansville Vanderburgh School Corporation	Teacher	Substitute teach Spanish, Dexter Elementary
Gap	Sales Associate	
3 enrolled in graduate/professional school		

Speech, Communications, Theatre (Surveys Returned: 1 of 1)

Evansville Catholic Diocese	Teacher	Teach theatre, advanced sophomore English, themes, & direct theatre productions, Memorial High School
-----------------------------	---------	---

Theatre Arts (Surveys Returned: 4 of 6)

	Actor	Bit parts off and on
Von Maur	Cosmetics	Oversee cosmetic counter
1 enrolled in graduate/professional school		
1 unemployed by choice		

Visual Art (Surveys Returned: 1 of 1)

MSD Pike, Fishback Creek Public Academy	Teacher	Teach K-5 visual art
---	---------	----------------------

Visual Art K-12 (Surveys Returned: 1 of 2)

Bullhead Community Schools	Teacher	
----------------------------	---------	--

ASSOCIATE DEGREES

Communications (Surveys Returned: 1 of 2)

Corporate Design & Sales	Account Executive	Commercial Sale
--------------------------	-------------------	-----------------

Social Science (Surveys Returned: 1 of 1)

Applebee's	Server	Serve food and drink to customer
------------	--------	----------------------------------

Employer**Position Title****Description****SCHOOL OF NURSING AND HEALTH PROFESSIONS****MASTER DEGREES****Acute Care Nurse Practitioner (Surveys Returned: 4 of 7)**

Dr. Hekimian	Nurse Practitioner	Provide in-patient and out-patient care
Blue Grass Gastroenterology	Acute Registered Nurse Practitioner	
Centennial Medical Center	Registered Nurse	Nurse, care for patients
Deaconess Hospital	Case Manager of Home Care	Performance improvement and paperwork

Clinical Nurse Specialist (Surveys Returned: 1 of 1)

Woman's Healthcare P.C.	Registered Nurse	See patients in an OB/GYN
-------------------------	------------------	---------------------------

Family Nurse Practitioner (Surveys Returned: 10 of 16)

Ivy Tech State College	Instructor	Nursing Instructor
Healthsouth	Registered Nurse Per Diem	Direct patient care responsibility
University of Southern Indiana	Grant Project Coordinator	Coordinate the Witness Project, a breast and cervical cancer education and screening program, train community volunteers, speak on cancer related topics
Open Door Clinic	Nurse Practitioner	
Ivy Tech State College	Associate Professor of Nursing	
U.S Army	Staff Nurse	Acute care clinic charge nurse
Family Medicine and Associates	Nurse Practitioner	
Saint Mary's College	Associate Professor	Nursing faculty and part time nurse practitioner
2 unemployed		

Health Administration (Surveys Returned: 4 of 8)

Tri-State Business Group on Health	Executive Director	Executive director of employer coalition concentrate on finding ways to help employers lower health care costs
Gibson General Hospital	Assistant Administrator, Patient Care Services	Responsible for all nursing units, pharmacy, case management, long-term care, behavioral health
Dr. Vicki Frey & David Thompson	Dental Hygienist	
Ball Memorial Hospital	Radiology Manager	Operations of the radiology department

Nursing Education (Surveys Returned: 5 of 6)

Ivy Tech State College	Department Chair of Assoc. Registered Nurse Program	
Ivy Tech State College	Instructor	Instructor in the Practical Nursing Program
Ivy Tech State College	Assistant Professor	Nurse educator for PN program
Ivy Tech State College	Nursing Instructor	Instruct nursing classes
Norton Healthcare	Registered Nurse	Cardiac lab

Nursing Management & Leadership (Surveys Returned: 3 of 6)

Kennesaw State University	Faculty	Clinical instructor
United States Navy	Nurse Manager	Active duty Navy Nurse Corps officer
Clarian Health Partners	Manager of Clinical Operations	Coordinate staff, perform evaluations, monitor clinical, manage employee relations
I enrolled in graduate/professional school		

BACHELOR DEGREES

Dental Hygiene Education (Surveys Returned: 4 of 10)

Dr. Rexing	Dental Hygienist	
Dr. Scott Norris	Dental Hygienist	Perform dental hygiene treatment
Evansville Pediatric Dentistry/Dr. Volz	Dental Assistant	
Dr. James Woodyard	Dental Hygienist	Dental education, scale/root plans for patients

Health Services (Surveys Returned: 26 of 57)

Humana Inc.	Human Resources Specialist	Support HR consultants & director in segment that encompasses compensation, associate relations, benefits, etc.
GFI Research Center	Quality Assurance Coordinator	Insure pharmaceutical companies that clinical studies will be completed with integrity and quality
St. Mary's Warrick Hospital	Registered Nurse	Transferred to jail nurse position
The Woman's Hospital	Registered Nurse	Care of gynecological and postpartum, work with the newborn nursery and neonatal intensive care unit
Mount Saint Joseph Center	Administrative Assistant	Assist director with all needs, type, file, copy, order office supplies, mail list
Deaconess Hospital-Deaconess LifeQuest	Wellness Coach	Provide wellness services for area businesses
Deaconess Hospital	Supervisor Support Services	Supervision of all support staff including receptionists and billing staff
St. Mary's Medical Center	Registered Nurse	Post surgical unit nurse

St. Mary's Medical Center		Distribute patient supplies using electronic inventory system
St. Mary's Medical Center	Registered Nurse	Provide care for patients in labor and delivery
Premier Medical Group	PTA	
Memorial Hospital Health	Health Educator	Set up and implement wellness workshops for the community and area businesses
St. Mary's Medical Center	Registered Nurse	Registered nurse in emergency room
Methodist Hospital Home Health	Department Secretary	Enter payroll, keep competencies up to date, prepare annual evaluation, monthly reports, patient satisfaction mail out and phone surveys
Med 1st	Physical Therapy Assistant	
American Red Cross-Southwestern Indiana Chapter	Development/Marketing Manager	Fundraise and outside health and safety sales
DentaSafe	Dental Assistant	Chair assist
Arc BRIDGES	Developmental Specialist	Supervise programs, develop and implement weekly activities for clients with MR & cerebral palsy
Aegis Therapy	Physical Therapy Assistant	Work in physical therapy in skilled nursing home
Deaconess Hospital	Technician	Technician in intensive care unit
Community Hospital	Registered Nurse	Patient care
1 enrolled in graduate/professional school		
4 unemployed		
4 pursuing additional undergraduate coursework		

Nursing (Surveys Returned: 21 of 45)

Branchville Correctional Facility	Registered Nurse	Work as a registered nurse for the state
Heartland Regional Medical Center	RN-ICU	
The Medical Center at Bowling Green	Clinical Staff Nurse	Provide nursing care to patients during invasive surgical procedures
River Pointe Health Campus	Staff Registered Nurse	Provide nursing care to residents on the health center
Metropolitan Methodist Hospital	Registered Nurse	Critical care nurse
Bedford Regional Medical Center	Vice President of Patient Services	
The Woman's Hospital	Registered Nurse	Nursing duties in the neonatal intensive care unit
Deaconess Hospital	Registered Nurse	Promote health, prevent disease and help patients cope with illness, react to patient progress, and assist MD's

Glaxo Smith Kline Pharmaceuticals	Pharmaceutical Sales Representative	
Deaconess Hospital	Registered Nurse	Take care of surgery patients
Memorial Hospital Health	Staff Nurse	Staff nurse on medical/telemetry unit
Shoals School Corporation/Jasper Hospital Pediatrics	School Nurse/Staff Nurse	School nursing care for patients in pediatric unit
St. Mary's Medical Center	Registered Nurse	Care for patients
Good Samaritan Hospital	Staff Nurse	Provide care to patients on a medical/surgical unit
Union Hospital	Registered Nurse	
Deaconess Hospital	Registered Nurse	Direct patient care
Deaconess Hospital	Registered Nurse	Care for patients in neurological care center
Evansville Surgery Center	Staff Nurse	Care for patients in recovery
Department of Veteran's Affairs	Registered Nurse	Managing continuity of care to approx. 1500 patients
Christopher Unit District #99	Registered Nurse-School Nurse	
1 enrolled in graduate/professional school		
1 unemployed by choice		

Occupational Therapy (Surveys Returned: 25 of 33)

Rehab Hospital of New Mexico	Occupational Therapist	Work with orthopedics, brain and spinal cord injuries, pediatrics, etc.
Extended Care Health Services at Medco	Occupational Therapist	Work with elderly
Crittenden County Health System	Occupational Therapist	
Evansville Association for the Blind	Coordinator	Coordinate program for blind infants & families, secure funding and budget development
Dubois and Perry, Spencer County Co-Op	Occupational Therapist	Provide occupational therapy for students K-12
TX Team	Occupational Therapist	Provide contract occupational therapy services to residents of a long term care facility
Progressive Health	Occupational Therapist	
Progressive Health	Occupational Therapist	
Kindred Healthcare - People First Rehab	Occupational Therapist	Work with patient evaluations, treatment and supervise certified occupational therapy assistants
Extencicare Health Services	Occupational Therapist	Assist patients with occupational therapy
Wabash Ohio Valley Special Education District	Occupational Assistant	Provide occupational assistance to children in school
Owensboro Medical Health Systems	Occupational Therapist-Rehabilitation	

Greater Jasper Consolidated School Corporation	Occupational Therapist	Travel around schools and help children that require occupational therapy
Brevard County Community Hospital	Occupational Therapist	Assist patients with occupational therapy
HealthCare Therapy Services	Occupational Therapist	See patients daily as inpatients, outpatients and home health
Reid Hospital	Occupational Therapist	Evaluate psychiatric patients and give treatment on physical dressing and grooming
Regional Medical Center	Occupational Therapist	
P.T. Services, Inc.	Occupational Therapist	Help patients with disabilities/handicaps restore functional independence
Highpoint Rehab	Occupational Therapist	
Deaconess Hospital	Occupational Therapist	Evaluate and treat patients with occupational therapy
Methodist Hospital	Pharmacy Technician	Assist pharmacy to fill prescriptions
Southern Illinois Healthcare	Occupational Therapist	
Franklin Meadow American Senior Communities	Occupational Therapist	Provide occupational therapy for seniors that need help functioning in every day life
2 enrolled in graduate/professional school		
1 unemployed		
1 unemployed by choice		

Radiologic & Imaging Sciences (Surveys Returned: 4 of 11)

Owensboro Mercy Health System	MRI Technologist	
Florida Hospital WP	Radiation Oncology Manager	Overall financial and clinical management of cancer center
Deaconess Hospital	Registered Nurse	Assist patients
Welborn Clinic	Radiographer	Perform radiology exams, practice patient care, file room duties

RN-MS Nursing (Surveys Returned: 3 of 5)

Western Baptist Hospital	Safe Communities Program Director	Inquiry prevention federal grant
Columbus Regional Hospital	Registered Nurse	
2 enrolled in graduate/professional school		

ASSOCIATE DEGREES

Dental Assisting (Surveys Returned: 2 of 5)

First Federal Saving Bank	Teller	
University of Southern Indiana	Resident Assistant, Intramural Sports Supervisor	
2 pursuing additional undergraduate coursework		

Dental Hygiene (Surveys Returned: 14 of 22)

Dr. Tod Curtis	Orthodontic Assistant	
Midwest Internal Medicine	Receptionist/Scheduler	Answer phones, copy charts, schedule patients and post charges
Dr. Colon	Dental Hygienist	Dental cleaning and treatment
Jim Dandy's Restaurant	Waitress	Wait on customer and prepare food
Dr. Canida	Dental Hygienist	Clean teeth and take x-rays
Dr. Switzer	Dental Hygienist	Clean teeth for patients
Oral Surgery Group	Dental Assistant	Assist the dentist, set up and break down trays
Boonville Dental Office	Dental Assistant	Work as dental hygiene assistant as a substitute
Monarch Dental Associates	Dental Hygienist	
Dr. Ann Shackelford	Dental Hygienist	
Dr. Greg Ortman	Dental Hygienist	
Landmark Family Dental Care	Dental Hygienist	
1 unemployed		
6 pursuing additional undergraduate coursework		

Nursing (Surveys Returned: 25 of 51)

Deaconess Hospital	Staff Registered Nurse	Care for patients
St. Mary's Medical Center	Registered Nurse	Care for patients in emergency department
St. Francis Hospital	Registered Nurse	Care for patients
Norton's Hospital	Registered Nurse	Care for patients
St. Mary's Medical Center	Registered Nurse	Care for patients
Deaconess Hospital	Registered Nurse	Patient care
Deaconess Hospital	Certified Nurse Assistant	Help patients with their activities of daily living
Deaconess Hospital	Registered Nurse	
St. Joseph's Hospital	Registered Nurse	Registered nurse on medical and surgical floor
Methodist Hospital	Registered Nurse	Nurse for medical and surgery
St. Mary's Medical Center	Registered Nurse	Staff nurse on ICU step-down unit
St. Mary's Medical Center	Registered Nurse	
St. Mary's Medical Center	Registered Nurse	Registered nurse in cardiovascular intensive care unit

Methodist Hospital	Nurse Extern	Provide care for patients
Deaconess Hospital	Registered Nurse	Take care of patients and needs
St. Vincent Hospital	Registered Nurse	Care for patients
Prison Health Services	Registered Nurse	Provide nursing care to inmates in jail
Deaconess Hospital	Registered Nurse	Collaborate patient care for multiple patients, give medicine, assess, talk with doctors
Deaconess Hospital	Registered Nurse	Work with staff/nurses, nurse in medical surgery, care for patients after surgery
Deaconess Hospital	Registered Nurse	
Deaconess Hospital	Registered Nurse	In the oncology unit
St. Mary's Medical Center	Registered Nurse	In the recovery room
Schneck Medical Center	Registered Nurse	Nurse in medical unit, patient care
St. Mary's Medical Center	Registered Nurse	Care for patients on renal/diabetic unit
Deaconess Hospital	Registered Nurse	Direct patient care in a hospital
21 pursuing additional undergraduate coursework		

Occupational Therapy Assistant (Surveys Returned: 5 of 10)

Stens	Packaging	Packing products
Southern Indiana Resource Solution	Community Resource Consultant	Work with individuals with disabilities
North Park Nursing Center	Occupational Therapy Assistant	Assist therapist for occupational therapy
Alliance Rehab	Occupational Therapy Assistant	Treat residents with intervention of occupational therapy services
Target		Office work, sales floor, cashier

Radiologic Technology (Surveys Returned: 8 of 14)

St. Mary's Medical Center	MRI Aide	Contact patients, stock rooms, dress and position patients, file paperwork
St. Mary's Medical Center	Radiologic Technician	Work with patients in X-ray department or ER
St. Mary's Medical Center	Computed Tomography Technician	Care for patients while performing CAT scans, etc.
Deaconess Hospital	Radiologic Technologist	Administer diagnostic X-rays
Methodist Hospital	Radiologic Technologist	Take radiographs & perform fibroscopic work
Bedford Regional Medical Center	Radiologic Technologist	Take X-rays, work in CT scan, run C-Arm in surgery cases
St. Mary's Medical Center	Radiologic Technologist	Take X-rays, perform patient care activities
St. Vincent	Radiologic Technologist	Take X-rays
4 pursuing additional undergraduate coursework		

Respiratory Therapy (Surveys Returned: 8 of 11)

Deaconess Hospital	Graduate Respiratory Therapist	Work w/patients on life support, intensive care, breathing treatments, take care of lungs
St. Mary's Medical Center	Respiratory Therapist	Administer breathing treatments, work on ER floor
St. Mary's Medical Center	Respiratory Therapist	Provide respiratory therapy in a hospital
St. Mary's Medical Center	Respiratory Therapist	
St. Mary's Medical Center	Respiratory Therapist	
Deaconess Hospital & Deaconess Sleep Control	Respiratory Therapist	Patient care
2 unemployed		
1 pursuing additional undergraduate coursework		

CERTIFICATE

Dental Assisting Certificate (Surveys Returned: 3 of 4)

Dr. Charles Kendall	Dental Assistant	Assist with dental work
N/A	Mission Worker	
1 pursuing additional undergraduate coursework		

Employer

Position Title

Description

POTT SCHOOL OF SCIENCE AND ENGINEERING

MASTER DEGREES

Industrial Management (Surveys Returned: 1 of 2)

Omni Plastics	Sales Engineer	Sales
---------------	----------------	-------

BACHELOR DEGREES

Biology (Surveys Returned: 13 of 25)

CVS Pharmacy	Pharmacy Intern	Fill prescription
Bristol-Myers	Quality Control Assistant	Conduct chemical testing on materials
Bristol-Myers	Laboratory Technician	Analytical, quality control in a nutritional plant
Henderson Board of Education	Teacher	Substitute teach
Vanderbilt University	Graduate Student (Assistant)	Learn to independently conduct original basic science research
Columbia Sportswear	Receiving Specialist	Report to inbound manager, responsible for the receipt & verification of all footwear
University of Southern Indiana	Temporary Clerk	Assist in student development office and supervise the AMIGO program
Deaconess Hospital	Specimen Processor	Process blood, urine and stool specimens and deliver to proper lab department
Wal-Mart	Cashier, Layaway Assistant	
8 enrolled in graduate/professional		
1 pursuing additional undergraduate coursework		

Chemistry (Surveys Returned: 4 of 5)

Aerotek	Laboratory Technician	Collect, prepare, & analyze samples of product
Warrick County School Corporation	Teacher	Teach high school chemistry and biology
2 enrolled in graduate/professional school		
1 unemployed		

Electrical Engineering Technology (Surveys Returned: 2 of 4)

AK Steel	Electrical Engineer	Install devices and design of new rolling strategies
Whirlpool	Process Engineer	

Geology (Surveys Returned: 4 of 8)

Angel Mounds	Office Worker	Clerical work and assistance seasonally
Texas Roadhouse	Server/Training Coordinator	Serve guests, set up orientation for new employees, in charge of store training
Berry Plastics	Assistant Customer Service	Talk to customers, various clerical duties

1 enrolled in graduate/professional school		
--	--	--

Mathematics (Surveys Returned: 5 of 5)

TimePlan Education Group Ltd.	Teacher	Teach math to middle school in England
North Gibson School Corporation	Teacher	Teach sixth - seventh grade math and science
Whirlpool	Laboratory Technician	Testing of any design change
Shetler Moving and Storage	Mover	
2 enrolled in graduate/professional school		

Mechanical Engineering Technology (Surveys Returned: 2 of 3)

AK Steel	Associate Mechanical Engineer	
Motor Coach Industries	Engineering Technician	Overall engineering tasks

Science Teaching (Surveys Returned: 2 of 2)

Clark-Pleasant Community	Teacher	Teach high school biology and chemistry, Whiteland Community High School
Flowers & More	Floral Designer	

Employer

Position Title

Description

EXTENDED SERVICES

BACHELOR DEGREES

Applied Studies (Surveys Returned: 1 of 2)

Pinnacle Computer Services	Training Specialist	
I enrolled in graduate/professional school		

Individual Studies (Surveys Returned: 3 of 6)

US Airways	Customer Service Manager	Manage US Airways Airlines
South Western Communications	Systems & Auto Cad Technician	Electronic technician for alarms, intercoms, installation, etc
Audubon Area Head Start	Computer Data	Put data in computer

**Professional/Graduate School Participation
Class of 2004**

PROFESSIONAL SCHOOL

<u>Degree</u>	<u>Major</u>	<u>Institution</u>	<u>Total # Attending</u>	<u>Undergraduate Major</u>
JD	Law	Indiana University, Indianapolis	1	Political Science
JD	Law	Valparaiso University	1	Political Science
MD	Optometry	Indiana University	1	Biology
MD	Medicine	Indiana University	2	Biology
MD	Medicine	University of Louisville	1	Biology
Pharm. D.	Pharmacy	Creighton University	1	Biology

DOCTORAL DEGREES

<u>Degree</u>	<u>Major</u>	<u>Institution</u>	<u>Total # Attending</u>	<u>Undergraduate Major</u>
PhD	School Psychology	Eastern Kentucky University	1	Psychology
PhD	Economics	Northern Illinois University	1	Economics
PhD	Unknown	University of Central Florida	1	Nursing Management & Leadership
PhD	Unknown	Louisiana State University	1	Business Administration
PhD	Rhetoric	University of Southern California	1	Liberal Studies
PhD	Pharmacology	Vanderbilt University	1	Biology
PhD	Chemistry	University of Louisville	1	Chemistry
PhD	Psychology	University of Oklahoma	1	Psychology

MASTER DEGREES IN BUSINESS AND ACCOUNTING

<u>Degree</u>	<u>Major</u>	<u>Institution</u>	<u>Total # Attending</u>	<u>Undergraduate Major</u>
MBA	Business Administration	University of Southern Indiana	11	Computer Information Systems (2) Management (2) Accounting & Professional Services(2) Finance (2) Business Administration Economics Public Relations & Advertising
MBA	Business Administration	Oklahoma University	1	Public Relations & Advertising
MSA	Accounting	University of Southern Indiana	5	Accounting & Professional Services (4) Post-Bacc. Certificate in Accounting

Professional/Graduate School Participation Class of 2004

MASTER DEGREES IN EDUCATION, SOCIAL WORK, COUNSELING, AND HEALTH-RELATED FIELDS

<u>Degree</u>	<u>Major</u>	<u>Institution</u>	<u>Total # Attending</u>	<u>Undergraduate Major</u>
MA	Criminal Justice	University of Cincinnati	1	Spanish
MA	Counseling	Dallas Theological Seminary	1	Business Administration
MA	College Administration	Kent State University of Ohio	1	Journalism & Computer Publishing
MA	Student Affairs	Eastern Illinois University	1	Biology
M.Ed.	Higher Ed./Student Affairs	Kent State University	1	Spanish
MHA	Health Administration	University of Southern Indiana	1	Mathematics
MS	School Counseling	University of Saint Frances	1	Social Work
MS	Physical Therapy	Medical University of South Carolina	1	Exercise Science
MS	Education	Oakland City University	1	Political Science
MS	Occupational Therapy	University of Southern Indiana	1	Occupational Therapy
MS	Rehab Counseling	Southern Illinois University	1	Occupational Therapy
MSE	Elementary Education	University of Southern Indiana	7	Elementary Education
MSE	Secondary Education	University of Southern Indiana	2	Chemistry Mathematics
MSE	Education	University of Louisville	1	Physical Education Non-Teaching
MSE	Education	University of Illinois	1	English
MSN	Acute Care Nurse Practitioner	University of Southern Indiana	2	RN-MS Nursing
MSN	Family Nurse Practitioner	Indiana University Purdue University Indianapolis	1	Health Services
MSN	Nursing	University of Southern Indiana	1	RN-MS Nursing
MSW	Social Work	University of Southern Indiana	8	Nursing Social Work (6) Spanish Psychology
MSW	Social Work	University of Illinois	1	Social Work
MSW	Social Work	Washington University, St Louis	1	Psychology
MSW	Social Work	University of Tennessee	1	Social Work

OTHER MASTER DEGREES

<u>Degree</u>	<u>Major</u>	<u>Institution</u>	<u>Total # Attending</u>	<u>Undergraduate Major</u>
MA	Arts, Entertainment & Media	Columbia College Chicago	1	Public Relations & Advertising
MA	English	Southern Illinois University- Carbondale	1	English
MA	Professional Media Practice	Southern Illinois University- Carbondale	1	Radio & Television
MALS	Liberal Studies	University of Southern Indiana	5	History (2) Philosophy Psychology Applied Studies
MFA	Theater	University of Missouri-Kansas City	1	Theatre Arts
MLS	Library Science	Indiana University	2	History
MPA	Public Administration	University of Evansville	1	Psychology
MS	Biology	Murray State University	1	Biology
MS	Economics	Illinois State University	1	Economics
MS	Geology	Indiana University Purdue University Indianapolis	1	Geology
Specialist Degree	Clinical-Child/ School Psychology	Southern Illinois University- Edwardsville	1	Psychology